

Courses\_

# Bachelor of Applied Science (Diagnostic Radiography)

Share



Former student Daniel Kilgour talks about studying the Bachelor of Applied Science (Diagnostic Radiography)

About us

## Global leaders in health education

### No.1 in Australia

The University is ranked first in Australia and fifth in the world for graduate employability in the QS Graduate Employability Rankings 2019.

Find out more.

### Known for excellence

The University is a world leader in health science research and education. All our research is ranked at world standard or above.

Find out more.

## Overview

The Bachelor of Applied Science (Diagnostic Radiography) provides you with the knowledge and skills to use the latest technology to produce high-quality medical images that can assist medical specialists and practitioners to describe, diagnose, monitor and treat a patient's injury or illness.

During this four year degree, you will:

- develop a comprehensive understanding of radiography including imaging technology, radiographic science and radiographic evaluation
- undertake significant clinical and professional fieldwork opportunities, providing hands-on experience with real clients in a supervised environment
- develop the advanced technical skills required to operate high tech medical imaging equipment - ranging from small mobile X-ray machines to sophisticated cardiac units.

## Why study with us?

- You'll gain real-world, hands-on training through clinical placements within our extensive network of clinical partners.
- You'll learn from highly respected practitioners, clinicians and researchers.
- With a multidisciplinary focus, we prepare graduates with generalist and specialist healthcare knowledge and skills.
- Our research ranks "well above world class" (Excellence in Research for Australia level 5).
- We offer a range of leadership and student support programs to give you the best possible opportunity for success.
- We have world-class facilities, with purpose-built laboratories and on-site health clinics.
- In 2021, we will move to the purpose-built [Health Precinct](#) at Camperdown campus, which will for the first time bring multiple health

Apply



Ask a question



The information on this page applies to prospective students. Current students should refer to their faculty handbooks for course information.



Join or watch a webinar about this course



## Admission, fees and how to apply

Depends on your qualification, citizenship status

I would like to start study in

2019



My qualification is from

AUSTRALIA



Domestic A...



I am

an Australian citizen (i...



The details on this page based on your selections are a guide only, and are subject to change.

## Admission information

Admission criteria - Check ATAR/IB or equivalent score



Most courses will have a [guaranteed ATAR](#) or entry score. If a score is not listed as guaranteed, an entry score will be provided as a guide.

Check the 'Admission criteria' section on this page for other important requirements that may apply to the course. For more on admissions see [undergraduate admission criteria](#).

View most recent [student and ATAR admission profiles](#).

Admission pathways



ATAR explained



## English language proficiency

TOEFL - IBT score



A minimum result of 85 overall including a minimum result of 17 in Reading, Listening and Speaking and 19 in Writing

Find out if you need to prove [English language proficiency](#) (depends on your country of origin and educational background).

Camperdown campus, which will for the first time bring multiple health disciplines together in a facility that translates research into education and clinical services.

[less information](#)

Course details	
Faculty/University School: Faculty of Health Sciences	
Credit points required: 192	Course abbreviation: BAppSc(DR)
USyd code: BPA5DRAD1000	UAC code: 513620
Study mode: On-campus day	Study type: UGCW
Location: Camperdown/Darlington campus	<a href="#">Graduate Attributes</a>
Duration full time: 4 years full time for Domestic and International students	
Duration part time: Not available part time	

Availability for international students	
Available to student visa holders and other eligible international students	
CRICOS code: 079215K	<a href="#">Visa information</a>

## What you'll study

The Bachelor of Applied Science (Diagnostic Radiography) is a four year full-time course which consists of 174 credit points of core units and 18 credit points of electives, including one International Health unit of study. You will complete 192 credit points to be awarded the degree.

An essential component of the course is the 48 week clinical education program commencing in the second year of your study, and continuing in the third and fourth year. You will undertake at least one rural or regional (non-metropolitan) clinical placement during the clinical program.

As a diagnostic radiography student, you will learn to work closely with other medical and allied health practitioners and to employ a range of technologies to produce medical images that can help provide an accurate diagnosis and sound patient care.

[less information](#)

Units of study



## Transition to Camperdown

We're moving to the Camperdown campus in 2021, and we've begun the transition. In some semesters, students will have classes at both the Cumberland and Camperdown campuses. Classes will be timetabled to allow students with a standard enrolment pattern to come to a single campus each day, where possible.

For example, the following units of study will be taught at the Camperdown/ Darlington:

Year 1 Sem 1	BIOS1155 Structure, Function and Disease A BIOS1167 Foundations of Biomedical Science HSBH1003 Health, Behaviour and Society MRTY1030 Medical Radiation Physics
Year 1 Sem 2	BIOS1158 Structure, Function and Disease B MRTY1036 Health Physics and Radiation Biology
Year 2	All units of study based at Cumberland campus
Year 3 Sem 2	HSBH3001 Health and Indigenous Populations HSBH3009 International Health
Year 4	Some electives may be offered at Camperdown campus

For further information about unit of study teaching locations, please refer to the [Health Sciences Handbook](#).

## Sample Study Plan

Bachelor of Applied Science (Diagnostic Radiography)

Year	Sem	Unit of study			
		Foundations of	Foundations of Work	Health. Behaviour	Health Physics and

## Your fee

**Student Contribution Amount (SCA) for year 1:**  
**\$9,359** (indicative only)

For Commonwealth Supported students commencing this course, the indicative SCA for Year 1 of full-time study of 48 credit points (1.0 EFTSL).

The SCA that you will pay depends on the calendar year in which you undertake your study in the course, and the specific units of study in which you enrol.

**This amount is subject to annual increase each year of your study (subject to a maximum amount determined by the Australian Government), effective at the start of each calendar year. Please read carefully the 'Important Fee Information' section set out below.**

## How to apply

Prospective domestic students apply through the Universities Admissions Centre (UAC) for a [Commonwealth ...](#)

[more information](#)

Refer to the [UAC website](#). Separate scholarship deadlines apply visit the [scholarships website](#) for details.

## Starting date

Semester 1 (February)

Apply



1	1	Biomedical Science	Integrated Learning	and Society	Radiation Biology
	2	Imaging Technology 1	Medical Radiation Physics	Structure, Function and Disease A	Structure, Function and Disease B
2	1	Image Optimisation and Processing	Imaging Technology 2	Radiographic Evaluation 1	Radiographic Evaluation 2
	2	Radiographic Science 1	Radiographic Science 2	Radiography Work Integrated Learning 1	Radiography Work Integrated Learning 2
3	1	Health and Indigenous Populations	Imaging Through the Lifespan	Professional Issues and Leadership	Radiographic Science 3
	2	Radiography Work Integrated Learning 3	Radiography Work Integrated Learning 4	Select one from: FHS Abroad, Health and Globalisation; or International Health	Elective (as approved)
4	1	Comparative Imaging	Radiographic Evaluation 3	Radiography Work Integrated Learning 5	Radiography Work Integrated Learning 6
	2	Radiography Work Integrated Learning 7	Radiography Work Integrated Learning 8	Elective	Professional Project (Capstone)

[less information](#)

## Assumed knowledge

Mathematics as well as one of either Biology, Chemistry or Physics is recommended.

[View the faculty handbook](#)



## Admission criteria

Admission to this course is on the basis of the following criteria:

- a [secondary education qualification](#) such as the NSW Higher School Certificate (including national and international equivalents), or [approved higher education study](#), including approved preparation courses.
- [English language requirements](#) where these are not demonstrated by sufficient qualifications taught in English.

The Bachelor of Applied Science (Diagnostic Radiography) course does not have a guaranteed ATAR. The ATAR information provided is an indication only and the actual required ATAR for entry may be higher or lower depending on student demand and availability of places in the course each year.

**Admission pathways** are open to domestic applicants on the basis of equity or other adjustment factors, including for Aboriginal and Torres Strait Islander applicants. For details, visit [admission pathways](#).

The [bridging course in physics](#) may be beneficial for students commencing this course.

## Inherent requirements

Inherent requirements are the essential tasks and activities necessary to be able to achieve the core learning outcomes of a course. They are specific to a particular course or discipline. To assist students to make informed choices about their study, we have identified and set out the [inherent requirements for this course](#).

## Course opportunities

An essential component of the Bachelor of Applied Science (Diagnostic Radiography) is clinical education. It provides an opportunity for the student to integrate the knowledge acquired in the professional units of study with the practical skills attained in the workplace. To broaden the student's clinical skills, candidates are placed in a variety of radiology centres to enable a breadth of experience in procedures, examinations and equipment.

In year 3 semester 2 candidates have the opportunity to take part in the [FHS Abroad program](#) which involves academic study and a four to six-week placement with non-government organisations and other development agencies in one of a small number of countries in South and South East Asia. This 6 credit point unit of study offers a hands-on understanding of global health challenges in an overseas community through work

with two well established Australian volunteer agencies.

## Professional accreditation

This degree program is accredited by the Medical Radiation Practice Board of Australia and is an approved program of study for general registration: [Approved Programs](#).

'Diagnostic Radiographer' is a protected title in Australia. Graduates of diagnostic radiography programs are required to register with the Medical Radiation Practice Board of Australia. Visit for more information about [registration](#).

The current registration conditions for this degree program do not require any period of supervised practice after graduation.

Members of the public may make a notification to the Australian Health Practitioner Regulation Agency (AHPRA) about the [conduct, health or performance](#) of a practitioner or the health of a student enrolled in this degree program.

Practitioners, employers and education providers are all mandated by law to report [notifiable conduct](#) relating to a registered practitioner or student. More information about [notification registration](#).

---

## Careers & future study

### Career pathways

Diagnostic radiographers have the opportunity to work in a range of settings, such as small regional hospitals, large metro imaging departments and private radiology centres. Career opportunities include:

- Imaging departments
- Intensive care departments
- Emergency departments
- Surgery theatre
- Private practice
- Research
- Education

### Honours

Honours can broaden your career options and is your pathway to a higher degree by research in the health sciences. Honours study allows you to specialise in an area of personal interest, develop your research skills and make a significant contribution to the development of knowledge within the profession. You will study under the supervision of an academic staff member.

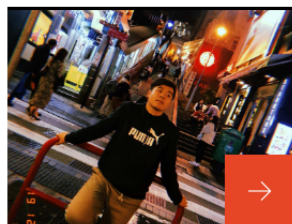
Honours is available to diagnostic radiography students as an integrated pathway through the final three semesters of the degree. Students will receive an invitation from an academic coordinator to express their interest during the second semester of their second year. Entry into honours is competitive and based on students' past academic performance.

Graduates of the Bachelor of Applied Science (Diagnostic Radiography) who do not choose the honours pathway and wish to further their study in this area may consider the [Master of Medical Imaging Science](#) or [Master of Health Technology Innovation](#).



### I study diagnostic radiography: Tara Liley

Tara Liley explains why she chose her degree, what a typical day looks like at uni, and what surprised her the most about studying at the University of Sydney.



### Student profile: Diagnostic radiography

We caught up with diagnostic radiography student Austen Yu, to find out why he chose his degree and what it's like studying at the University of Sydney.



---

## The Sydney Experience





Start your journey at the University of Sydney

The Sydney Undergraduate Experience



## **Important fee information**



### Domestic students

#### **Indicative Undergraduate Student Contribution Amount**

The student contribution amount for a Commonwealth Supported Place is an indication only of the amount payable in Year 1 for a standard full time load of 48 credit points (1.0 EFTSL). The exact student contribution that you pay will depend on the calendar year in which you undertake your study in the course, and the specific units of study in which you enrol. For further information about how to calculate your specific total student contribution, please refer to the University's [Tuition Fees website](#).

#### **Annual review and fee increases**

Importantly, student contribution amounts are subject to annual review by the University, and will increase each year of your period of study (subject to a Commonwealth specified cap), effective at the start of each calendar year.

#### **Additional incidental costs**

Please note that for some courses there are additional costs in addition to the student contribution. Some of these additional costs are significant, for example, course-specific materials, tools, protective clothing, and equipment. Please consult the University's web page for more information: <https://sydney.edu.au/students/materials-and-equipment.html>.

#### **Visa/MasterCard/American Express/JCB surcharge**

Please note that a surcharge of 1.53% will apply for payments made by Visa, MasterCard, American Express or JCB. The surcharge is subject to review and may change. Information about payment methods and the surcharge is set out at: <http://sydney.edu.au/study/finances-fees-costs/fees-and-loans/paying-your-fees.html>.

#### **Potential for inaccuracy**

Whilst every reasonable effort has been made to include correct and up to date information here, you are also advised to consult directly with the Student Centre so that they can provide you with specific and up to date information about fees.

### International students

## Indicative International Tuition Fees for Undergraduate Students

The tuition fee for international undergraduate students is an indication of the fees payable in Year 1 for a standard full time load of 48 credit points (1.0 EFTSL). Depending on the calendar year in which you undertake your study, and if your study load is more or less than the 1.0 EFTSL, your tuition fee will differ from the indicative amount. For further information about how to calculate your specific total tuition fees, please refer to the University's [Tuition Fees website](#)

### Annual review and fee increases

Importantly, tuition fees are subject to annual review, and will increase each year of your period of study, effective at the start of each calendar year.

### Additional incidental costs and health insurance

For some courses there are incidental costs additional to the tuition fees. Some of these incidental costs are significant, for example, course-specific materials, tools, protective clothing, and equipment. Further information about these costs is available from <https://sydney.edu.au/students/materials-and-equipment.html>. In addition to the fees indicated here for the course of study, International Students studying on an Australian Student Visa must have appropriate health insurance for the duration of their studies on a Student Visa through a government approved provider of the Overseas Student Health Cover (OSHC) scheme. This is a requirement of the Australian Government, unless otherwise exempted by the Government. Further information is available from <https://sydney.edu.au/study/finances-fees-costs/living-costs/health-insurance.html>.

### Visa/MasterCard/American Express/JCB surcharge

Please note that a surcharge of 1.53% will apply for payments made by Visa, MasterCard, American Express or JCB. The surcharge is subject to review and may change. Information about payment methods and the surcharge is set out at: <http://sydney.edu.au/study/finances-fees-costs/fees-and-loans/paying-your-fees.html>.

### Potential for inaccuracy

Whilst every reasonable effort has been made to include correct and up to date information here, you are also advised to consult directly with the [Student Centre](#) so that they can provide you with specific and up to date information about fees.

## Disclaimer

The course information on this website applies only to prospective students. Current students should refer to faculty handbooks for current or past course information.



To help you understand common terms that we use at the University, we offer an [online glossary](#).



*Leadership for good starts here*



#### Media

News

#### Student links

How to log in to University systems

#### About us

Our rankings

#### Connect

Contact us



Courses\_

# Bachelor of Applied Science (Exercise and Sport Science)

Share



Find out more about the Bachelor of Applied Science (Exercise and Sport Science)

About us

## Global leaders in health education

### No.1 in Australia

The University is ranked first in Australia and fifth in the world for graduate employability in the QS Graduate Employability Rankings 2019.

Find out more

### Top ranked in sport

The University is ranked second in Australia and fourth in the world for sport, physical therapy and rehabilitation in the QS Subject Rankings 2019.

Find out more

## Overview

Please note this information relates to 2020 intake and beyond

The Bachelor of Applied Science (Exercise and Sport Science) develops the skills to integrate exercise and physical activity with disease prevention and the promotion of good health, rehabilitation, nutrition and sports performance.

Students will have the opportunity to study a wide range of elective units or to take a major or minor sequence from another discipline area to complement their major in exercise science.

As an exercise and sport science student, you will learn how to integrate exercise and physical activity with health, sports performance and disease prevention. Exercise scientists help people recover from injury, maximise the performance of elite athletes, promote healthy ageing and generally improve people's health and wellbeing.

During this three year degree, your studies will cover all aspects of exercise and sport science, including musculoskeletal anatomy, body systems, muscle mechanics and training, neuroscience, nutrition, exercise testing and prescription, and motor control and learning.

This program incorporates significant clinical and professional fieldwork opportunities, providing hands-on experience with real clients in a supervised environment. Through completion of a minimum of 140 hours of approved professional experience, you will learn to effectively combine the academic components of the course with the practical abilities required of the profession.

## Why study with us?

1. You'll gain real-world, hands-on training through clinical placements within our extensive network of clinical partners.
2. You'll learn from highly respected practitioners, clinicians and researchers.
3. With a multidisciplinary focus, we prepare graduates with generalist and specialist healthcare knowledge and skills.
4. Our research ranks "well above world class" (Excellence in Research for Australia level 5).
5. We offer a range of leadership and student support programs to give you the best possible opportunity for success.
6. We have world-class facilities, with purpose-built laboratories and on-site

Apply



Ask a question



The information on this page applies to prospective students. Current students should refer to their faculty handbooks for course information.



Join a webinar to find out more about our courses



## Admission, fees and how to apply

Depends on your qualification, citizenship status

I would like to start study in

2020



My qualification is from

N/A



N/A



I am

an Australian citizen (i...



The details on this page based on your selections are a guide only, and are subject to change.

## Admission information

Admission pathways



ATAR explained



## English language proficiency

TOEFL - IBT score



A minimum result of 85 overall including a minimum result of 17 in Reading, Listening and Speaking and 19 in Writing

Find out if you need to prove [English language proficiency](#) (depends on your country of origin and educational background).

## Your fee

The Student Contribution Amount for this course is currently not available. These amounts are set by the Australian Government and updated annually, by September for the following year. More information can be found at [Study Assist](#).

## How to apply

Prospective domestic students apply through the Universities Admissions Centre (UAC) for a [Commonwealth supported place](#). Refer to the [UAC website](#) for key dates. Separate scholarship deadlines apply, visit the [scholarships website](#) for details.

For other useful information, visit our [How to apply](#) page.

health clinics.

7. In 2021, we will move to the purpose-built [Health Precinct](#) at Camperdown campus, which will for the first time bring multiple health disciplines together in a facility that translates research into education and clinical services.

[less information](#)

#### Course details

Faculty/University School: Faculty of Health Sciences

Credit points required: 144

Course abbreviation: BAppSc(Ex&SpSc)

USyd code: BPASESSC3000

UAC code: 513625

Study mode: On-campus day

Study type: UGCW

Location: Camperdown/Darlington campus

[Graduate Attributes](#)

Duration full time: 3 years full time for Domestic and International students

Duration part time: Not available part time

#### Availability for international students

Available to student visa holders and other eligible international students

CRICOS code: 022306M

[Visa information](#)

#### Subject areas

There are no majors for this course.

ALL

Exercise Science  
(Major)

Physical Activity  
and Health  
(Minor)

#### Shared pool

ALL

Biological  
Design (Major)

Biological  
Design (Minor)

Criminology  
(Minor)

Disability and  
Participation  
(Major)

Disability and  
Participation  
(Minor)

Environmental,  
Agricultural and  
Resource  
Economics  
(Major)

Environmental,  
Agricultural and  
Resource  
Economics  
(Minor)

Physical Activity  
and Health  
(Major)

Physical Activity  
and Health  
(Minor)

Units of Study



Handbook



#### Admission criteria

Admission to this course is on the basis of the following criteria:

- a [secondary education qualification](#) such as the NSW Higher School Certificate (including national and international equivalents), or [approved higher education study](#), including approved preparation courses.
- [English language requirements](#) where these are not demonstrated by sufficient qualifications taught in English.

The Bachelor of Applied Science (Exercise and Sport Science) course does not have a guaranteed ATAR. The ATAR information provided is an indication only and the actual required ATAR for entry may be higher or lower depending on student demand and availability of places in the course each year.

**Admission pathways** are open to domestic applicants on the basis of equity or other adjustment factors, including for Aboriginal and Torres Strait Islander applicants. For details, visit [admission pathways](#).

Current University of Sydney students applying to transfer from one bachelor's degree to another apply directly to the University. The exact process will depend on the course you are currently in and the course to which you wish to transfer. For more information visit the [Change your course](#) page.

Current students applying to transfer from a diploma to a bachelor's degree must apply through UAC.

[less information](#)

Refer to the [UAC website](#). Separate scholarship deadlines apply visit the [scholarships website](#) for details.

#### Starting date

Semester 1 (February)

#### Similar courses

##### Medicine and Health

Graduate Certificate in  
Cancer and Haematology  
Nursing

Graduate Certificate in  
Evidence-Based  
Complementary  
Medicines

Graduate Diploma in  
Science in Medicine  
(Sleep Medicine)

Master of Surgery  
(Endocrine Surgery)

#### Related articles

[5 reasons why allied health could be the future](#) →  
[I study health at the University of Sydney](#) →

Apply



## Inherent Requirements

Inherent requirements are the essential tasks and activities necessary to be able to achieve the core learning outcomes of a course. They are specific to a particular course or discipline. To assist students to make informed choices about their study, we have identified and set out the [inherent requirements for this course](#).

## Course opportunities

Professional fieldwork is an integral part of the Bachelor of Applied Science (Exercise and Sport Science). The purpose of the professional field experience program is to apply theoretical knowledge to practice in a variety of community settings. The 140 hours of practical experience is also a requirement for membership of the professional body for Australian exercise scientists (Exercise and Sport Science Australia).

In addition, eligible candidates have the opportunity to take part in the FHS Abroad program which involves academic study and a four to six week placement with non-government organisations and other development agencies in one of a small number of countries in South and South East Asia. This 6 credit point elective unit of study is available to candidates in their senior years and offers a hands-on understanding of global health challenges in an overseas community through work with two well established Australian volunteer agencies.

## Professional accreditation

Graduates are eligible to apply for membership with Exercise and Sport Science Australia and professional registration as an exercise scientist.

As an exercise scientist accredited in Australia, graduates enjoy the privilege of being qualified within a country that possesses an outstanding reputation in this field. Graduates have the opportunity to utilise principles such as biomechanics, musculoskeletal rehabilitation and gait analysis to evaluate and improve the performance of a diverse range of clients.

---

## Career outcomes

### Career Pathways

- sport industry
- fitness industry
- health industry
- occupational health and safety
- public health
- rehabilitation
- research and technology
- education
- medical insurance

The Bachelor of Applied Science (Exercise and Sport Science) course meets the prerequisite requirements for admission to postgraduate study at the University of Sydney in medicine, physiotherapy, occupational therapy, public health, safety science, and education.

## Honours

Honours can broaden your career options and is your pathway to a higher degree by research in the health sciences. Honours study allows you to specialise in an area of personal interest, develop your research skills and make a significant contribution to the development of knowledge within the profession. You will study under the supervision of an academic staff member.

Honours is available as an additional year of study after you complete the Bachelor of Applied Science (Exercise and Sport Science).

Entry into honours is competitive and based on students' past academic performance. For more information about honours, see our [honours website](#).

---

News\_



### 6 things we discovered about studying exercise and sports science

▲ We followed first-year, Bachelor of Applied Science (Exercise and Sports Science) student, Ali McGill around on a typical day on campus to ask her 15 questions about studying exercise and sports science at the University of Sydney – why she chose it, what she likes about it, →

---

News\_



### I study exercise and sport science: Michele Ducquet

▲ We asked Bachelor of Applied Science (Exercise and Sport Science) student Michele Ducquet why she chose her degree, and what life is like as a uni student.



and what surprised her most about university life.



---

## **The Sydney Experience**

---



This is the University of Sydney

The Sydney Undergraduate Experience



---

## **Important fee information**

---

### Domestic students

#### Indicative Undergraduate Student Contribution Amount

The student contribution amount for a Commonwealth Supported Place is an indication only of the amount payable in Year 1 for a standard full time load of 48 credit points (1.0 EFTSL). The exact student contribution that you pay will depend on the calendar year in which you undertake your study in the course, and the specific units of study in which you enrol. For further information about how to calculate your specific total student contribution, please refer to the University's [Tuition Fees website](#).

#### Annual review and fee increases

Importantly, student contribution amounts are subject to annual review by the University, and will increase each year of your period of study (subject to a Commonwealth specified cap), effective at the start of each calendar year.

#### Additional incidental costs

Please note that for some courses there are additional costs in addition to the student contribution. Some of these additional costs are significant, for example, course-specific materials, tools, protective clothing, and equipment. Please consult the University's web page for more information: <https://sydney.edu.au/students/materials-and-equipment.html>.

#### Visa/MasterCard/American Express/JCB surcharge

Please note that a surcharge of 1.53% will apply for payments made by Visa, MasterCard, American Express or JCB. The surcharge is subject to review and may change. Information about payment methods and the surcharge is set out at: <http://sydney.edu.au/study/finances-fees-costs/fees-and-loans/paying-your-fees.html>.

#### Potential for inaccuracy

Whilst every reasonable effort has been made to include correct and up to date information here, you are also advised to consult directly with the Student Centre so that they can provide you with specific and up to date

information about fees.

## International students

### Indicative International Tuition Fees for Undergraduate Students

The tuition fee for international undergraduate students is an indication of the fees payable in Year 1 for a standard full time load of 48 credit points (1.0 EFTSL). Depending on the calendar year in which you undertake your study, and if your study load is more or less than the 1.0 EFTSL, your tuition fee will differ from the indicative amount. For further information about how to calculate your specific total tuition fees, please refer to the University's [Tuition Fees website](#)

### Annual review and fee increases

Importantly, tuition fees are subject to annual review, and will increase each year of your period of study, effective at the start of each calendar year.

### Additional incidental costs and health insurance

For some courses there are incidental costs additional to the tuition fees. Some of these incidental costs are significant, for example, course-specific materials, tools, protective clothing, and equipment. Further information about these costs is available from <https://sydney.edu.au/students/materials-and-equipment.html>. In addition to the fees indicated here for the course of study, International Students studying on an Australian Student Visa must have appropriate health insurance for the duration of their studies on a Student Visa through a government approved provider of the Overseas Student Health Cover (OSHC) scheme. This is a requirement of the Australian Government, unless otherwise exempted by the Government. Further information is available from <https://sydney.edu.au/study/finances-fees-costs/living-costs/health-insurance.html>.

### Visa/MasterCard/American Express/JCB surcharge

Please note that a surcharge of 1.53% will apply for payments made by Visa, MasterCard, American Express or JCB. The surcharge is subject to review and may change. Information about payment methods and the surcharge is set out at: <http://sydney.edu.au/study/finances-fees-costs/fees-and-loans/paying-your-fees.html>.

### Potential for inaccuracy

Whilst every reasonable effort has been made to include correct and up to date information here, you are also advised to consult directly with the [Student Centre](#) so that they can provide you with specific and up to date information about fees.

## Disclaimer

The course information on this website applies only to prospective students. Current students should refer to faculty handbooks for current or past course information.



To help you understand common terms that we use at the University, we offer an [online glossary](#).



*Leadership for good starts here*



#### Media

News  
Find an expert  
Media contacts

#### Student links

How to log in to University systems  
Key dates  
Class timetables  
Libraries

#### About us

Our rankings  
Faculties and schools  
Centres and institutes  
Campus locations  
Maps and locations

#### Connect

Contact us  
Find a staff member  
Careers at Sydney  
Events  
Emergencies and personal



Courses\_

# Bachelor of Applied Science (Exercise and Sport Science) Honours

Share 

Launch your career in medicine and health at the University of Sydney.

About us

## Global leaders in health education

### No.1 in Australia

The University is ranked first in Australia and fourth in the world for graduate employability in the QS Graduate Employability Rankings 2018.

[Find out more.](#)

### Top ranked in sport

The University is ranked number two in the world for sport, physical therapy and rehabilitation in the QS Subject Rankings 2018.

[Find out more.](#)

## Overview

Pursue your interests and enhance your career. The Bachelor of Applied Science (Exercise and Sport Science) (Honours) program is a fourth year of study during which you will conduct a research project and write a thesis under the supervision of a senior academic, developing specialist knowledge and invaluable research skills.

As an Honours student, you will study alongside leading researchers in the discipline of exercise and sport science as you develop the expertise and practical skills needed to utilise and produce high quality research. Entry to the Honours program will commence in year four and is available to meritorious students currently enrolled in the Bachelor of Applied Science (Exercise and Sports Science) (Pass) degree.

You will complete two units of study throughout your Honours year. In semester 1, you will commence Honours A: Research Design, which covers quantitative and qualitative research methods and will enable you to develop your research proposal. You will then undertake Honours B: Applied Research Skills in semester 2. In this unit you will cultivate skills in data analysis and the interpretation of results. You will also learn how to write up and present your research findings. The Honours program culminates in a presentation and the submission of a scholarly thesis for examination, in the form of a journal manuscript.

Undertaking an additional year of Honours is a unique opportunity to push the

[Apply](#)

[Ask a question](#)


The information on this page applies to prospective students. Current students should refer to their faculty handbooks for course information.



## Bachelor of Advanced Studies

Supercharge your undergraduate degree


[Dalyell Scholars program](#)


## Admission, fees and how to apply

Depends on your qualification, citizenship status

I would like to start study in

2019



My qualification is from

N/A



N/A



I am

an Australian citizen (i...



The details on this page based on your selections are a guide only, and are subject to change.

## Admission information

[Admission pathways](#)

[ATAR explained](#)


## English language proficiency

TOEFL - IBT score



A minimum result of 85 overall including a minimum result of 17 in Reading, Listening and Speaking and 19 in Writing

Find out if you need to prove [English language](#)

frontiers of knowledge, develop and prove your critical abilities, and expand your career prospects. For more information [about Honours](#).

[less information](#)

Course details	
Faculty/University School: Faculty of Health Sciences	
Credit points required: 48	Course abbreviation: BAppSc(Ex&SpSc) (Hons)
USyd code: BHASESSH1000	UAC code: N/A
Study mode: On-campus day	Study type: HONS
Location: Cumberland campus	<a href="#">Graduate Attributes</a>
Duration full time: 4 years (entry after completion of year 3) for Domestic and International students	
Duration part time: Not available part time	

Availability for international students	
Available to student visa holders and other eligible international students	
CRICOS code: 028770E	<a href="#">Visa information</a>

## What you'll study

Honours subject areas can vary according to Discipline and methodological approach. In Health Sciences, topics may focus on a particular area of health care practice or a topical health issue. Other projects may examine interventions or strategies that aim to improve health outcomes. More information [about Honours](#).

The focus of the Honours program is on individual research. Students will complete two units of study over the twelve months. In semester 1, students will commence Honours A: Research Design, which covers quantitative and qualitative research methods and will form the development of their research proposal. Students then undertake Honours B: Applied Research Skills in semester 2. Students will develop skills in data analysis and interpretation of the results. They will also learn how to write up and present their research findings. The Honours program culminates in a presentation and the submission of a scholarly thesis for examination, in the form of a journal manuscript.

## Honours awards and classes

The Bachelor of Applied Science (Exercise and Sport Science) Honours degree is awarded in classes ranging from First Class to Third Class according to the rules specified in the Resolutions of the Faculty of Health Sciences.

## Postgraduate research at the University

Studying for a higher degree by research in the health sciences at the University of Sydney is a unique opportunity to push the frontiers of knowledge, develop and prove your critical abilities, and expand your career prospects.

Our leading research groups in clinical and rehabilitation sciences, exercise health and performance, medical imaging and radiation sciences, health systems and global populations, offer flexible doctoral and master's by research programs to outstanding graduates. You can also work closely with a talented, multidisciplinary team in our Ageing, Work and Health research or our Health Informatics Research and Evaluation unit.

[less information](#)

Units of Study



[proficiency](#) (depends on your country of origin and educational background).

## Your fee

**Student Contribution Amount (SCA) for year 1:**  
**\$9,359** (indicative only)

For Commonwealth Supported students commencing this course, the indicative SCA for Year 1 of full-time study of 48 credit points (1.0 EFTSL).

The SCA that you will pay depends on the calendar year in which you undertake your study in the course, and the specific units of study in which you enrol.

**This amount is subject to annual increase each year of your study (subject to a maximum amount determined by the Australian Government), effective at the start of each calendar year.**

**Please read carefully the 'Important Fee Information' section set out below.**

## How to apply

You can apply online via the application portal. When you are ready to apply, select the...

[more information](#)

### Application dates

#### Direct applicants:

**Applications open** – 3rd week of September 2018

**Applications close** – 11 January 2019

**Offers** – 18 January 2019

Due to the limited number of places available in this course, applications may close earlier if the course is full.

We strongly encourage applicants to apply as early as possible, offers are made on a rolling basis and places are limited. Separate scholarship deadlines apply – check the [scholarships website](#) for details.

## Starting date

Semester 1 (February)

Apply



## Sample study plan

### Bachelor of Applied Science (Exercise and Sport Science) Honours

Year	Sem	Units of study
1	1	Honours semester one
	2	Honours semester two

[less information](#)

## Applying for honours

The Bachelor of Applied Science (Exercise and Sport Science) Honours degree is your chance to become a member of a community of health professionals committed to moving their career forward through research. Under a senior scholar, each student will develop research skills and make a significant contribution to the development of knowledge in their profession.

View the faculty handbook



## Admission criteria

To qualify for admission to the Honours year a candidate must have:

- qualified for the award of, or been awarded, the pass degree in Bachelor of Applied Science (Exercise and Sports Science) pass program at the Faculty of Health Sciences, The University of Sydney

AND

- a Weighted Average Mark (WAM) of at least 65.

The academic requirements that are displayed are applicable to currently available courses only, and are updated annually in October and may be changed without notice. The [Handbooks Online](#) and the University of Sydney Calendar are the official legal source of information relating to study at the University of Sydney, and you are referred to those documents.

### Inherent Requirements

To assist students to make informed choices about their study, we have identified and set out the [Inherent Requirements](#) for coursework award courses in exercise and sport science.

The University of Sydney welcomes and encourages applications from students with disabilities, and from diverse social and cultural backgrounds. Where there are physical, intellectual, cultural, religious or other factors that impact on a student's ability to meet the Inherent Requirements, the University will make reasonable adjustments to assist the student to meet the requirements. Please read the Inherent Requirements carefully as you consider your course choices.

Student profiles



## Careers & future study



### Graduate Opportunities

Graduates of the Bachelor of Applied Science (Exercise and Sport Science) are scientists with a wide range of theoretical knowledge, practical skills and expertise. The career paths followed by graduates are many and varied and depend mostly on the specific interests and aspirations of the individual. Broadly defined, the areas of employment entered by recent graduates include the sport industry, fitness industry, health industry, occupational health and safety, public health, rehabilitation, research and technology, education and medical insurance. For graduates seeking further career development or professional accreditation, the Bachelor of Applied Science (Exercise and Sport Science) course meets the prerequisite requirements for admission to postgraduate study at the University of Sydney in medicine, physiotherapy, occupational therapy, public health, safety science, and education.



## The Sydney Experience



The Sydney Undergraduate Experience



## Important fee information

### Domestic students

#### Indicative Undergraduate Student Contribution Amount

The student contribution amount for a Commonwealth Supported Place is an indication only of the amount payable in Year 1 for a standard full time load of 48 credit points (1.0 EFTSL). The exact student contribution that you pay will depend on the calendar year in which you undertake your study in the course, and the specific units of study in which you enrol. For further information about how to calculate your specific total student contribution, please refer to the University's [Tuition Fees website](#).

#### Annual review and fee increases

Importantly, student contribution amounts are subject to annual review by the University, and will increase each year of your period of study (subject to a Commonwealth specified cap), effective at the start of each calendar year.

#### Additional incidental costs

Please note that for some courses there are additional costs in addition to the student contribution. Some of these additional costs are significant, for example, course-specific materials, tools, protective clothing, and equipment. Please consult the University's web page for more information: <https://sydney.edu.au/students/materials-and-equipment.html>.

#### Visa/MasterCard/American Express/JCB surcharge

Please note that a surcharge of 1.53% will apply for payments made by Visa, MasterCard, American Express or JCB. The surcharge is subject to review and may change. Information about payment methods and the surcharge is set out at: <http://sydney.edu.au/study/finances-fees-costs/fees-and-loans/paying-your-fees.html>.

## Potential for inaccuracy

Whilst every reasonable effort has been made to include correct and up to date information here, you are also advised to consult directly with the Student Centre so that they can provide you with specific and up to date information about fees.

## International students

### Indicative International Tuition Fees for Undergraduate Students

The tuition fee for international undergraduate students is an indication of the fees payable in Year 1 for a standard full time load of 48 credit points (1.0 EFTSL). Depending on the calendar year in which you undertake your study, and if your study load is more or less than the 1.0 EFTSL, your tuition fee will differ from the indicative amount. For further information about how to calculate your specific total tuition fees, please refer to the University's [Tuition Fees website](#)

### Annual review and fee increases

Importantly, tuition fees are subject to annual review, and will increase each year of your period of study, effective at the start of each calendar year.

### Additional incidental costs and health insurance

For some courses there are incidental costs additional to the tuition fees. Some of these incidental costs are significant, for example, course-specific materials, tools, protective clothing, and equipment. Further information about these costs is available from <https://sydney.edu.au/students/materials-and-equipment.html>. In addition to the fees indicated here for the course of study, International Students studying on an Australian Student Visa must have appropriate health insurance for the duration of their studies on a Student Visa through a government approved provider of the Overseas Student Health Cover (OSHC) scheme. This is a requirement of the Australian Government, unless otherwise exempted by the Government. Further information is available from <https://sydney.edu.au/study/finances-fees-costs/living-costs/health-insurance.html>.

### Visa/MasterCard/American Express/JCB surcharge

Please note that a surcharge of 1.53% will apply for payments made by Visa, MasterCard, American Express or JCB. The surcharge is subject to review and may change. Information about payment methods and the surcharge is set out at: <http://sydney.edu.au/study/finances-fees-costs/fees-and-loans/paying-your-fees.html>.

## Potential for inaccuracy

Whilst every reasonable effort has been made to include correct and up to date information here, you are also advised to consult directly with the [Student Centre](#) so that they can provide you with specific and up to date information about fees.

---

## Disclaimer

The course information on this website applies only to prospective students. Current students should refer to faculty handbooks for current or past course information.



To help you understand common terms that we use at the University, we offer an [online glossary](#).



*Leadership for good starts here*



Follow us \_

## Media

News  
Find an expert  
Media contacts

## Student links

How to log in to University systems  
Key dates  
Class timetables  
Libraries

## About us

Our rankings  
Faculties and schools  
Centres and institutes  
Campus locations  
Maps and locations

## Connect

Contact us  
Find a staff member  
Careers at Sydney  
Events  
Emergencies and personal safety

Member of



[Disclaimer](#)

[Privacy](#)

[Accessibility](#)

[Website feedback](#)

ABN: 15 211 513 464  
CRICOS Number: 00026A  
TEQSA: PRV12057

Courses\_

# Bachelor of Applied Science (Exercise Physiology)

Share 

## Study exercise physiology

Which sport and fitness course is right for you?

About us

### Global leaders in health education

#### No. 1 in Australia

The University is ranked first in Australia and fifth in the world for graduate employability in the QS Graduate Employability Rankings 2019.

[Find out more.](#)

#### Top ranked in sport

The University is ranked second in Australia and fourth in the world for sport, physical therapy and rehabilitation in the QS Subject Rankings 2019.

[Find out more.](#)

## Overview

The Bachelor of Applied Science (Exercise Physiology) provides students with the knowledge, competencies and clinical experience required to deliver exercise and behaviour change strategies for the prevention and management of chronic diseases.

Exercise physiologists specialise in the delivery of exercise and behaviour change for the prevention and management of conditions such as cardiovascular disease, diabetes, obesity, osteoporosis, depression, cancer and arthritis.

During this four year degree you will develop competency in the assessment of physical and functional capacity, the identification of risks and the design of targeted, functional and sustainable exercise programs.

You will gain a comprehensive understanding of exercise physiology, including areas such as musculoskeletal anatomy, muscle mechanics and training, the biomechanics of human movement, neuroscience, nutrition, rehabilitation, and exercise testing and prescription.

This flexible degree offers you the chance to study a wide range of electives alongside your core subjects. This allows you to meet the requirements for

Apply



Ask a question



The information on this page applies to future students. Current students should refer to their faculty handbooks for course information.


[Join or watch a webinar about this course](#)


## Admission, fees and how to apply

Depends on your qualification, citizenship status

I would like to start study in

2019



My qualification is from

AUSTRALIA



Domestic A...



I am

an Australian citizen (i...



The details on this page based on your selections are a guide only, and are subject to change.

## Admission information

Admission criteria - Check ATAR/IB or equivalent score



Most courses will have a [guaranteed ATAR](#) or entry score. If a score is not listed as guaranteed, an entry score will be provided as a guide.

Check the 'Admission criteria' section on this page for other important requirements that may apply to the course. For more on admissions see [undergraduate admission criteria](#).

View most recent [student and ATAR admission profiles](#).

[Admission pathways](#)

[ATAR explained](#)


## English language proficiency

TOEFL - IBT score



alongside your core subjects. This allows you to meet the requirements for professional registration as well as experience a broad range of subjects from across the university.

Through clinical experience, you will also learn how to apply your knowledge and gain significant practical experience, working with a range of different clients in numerous settings such as gyms, hospitals and on-site clinics.

### Why study with us?

- You'll gain real-world, hands-on training through clinical placements within our extensive network of clinical partners.
- You'll learn from highly respected practitioners, clinicians and researchers.
- With a multidisciplinary focus, we prepare graduates with generalist and specialist healthcare knowledge and skills.
- Our research ranks "well above world class" (Excellence in Research for Australia level 5).
- We offer a range of leadership and student support programs to give you the best possible opportunity for success.
- We have world-class facilities, with purpose-built laboratories and on-site health clinics.
- In 2021, we will move to the purpose-built [Health Precinct](#) at Camperdown campus, which will for the first time bring multiple health disciplines together in a facility that translates research into education and clinical services.

[less information](#)

Course details	
Faculty/University School: Faculty of Health Sciences	
Credit points required: 192	Course abbreviation: BAppSc (ExPhys)
USyd code: BPAEXPH2000	UAC code: 513630
Study mode: On-campus Day	Study type: UGCW
Location: Camperdown/Darlington campus	<a href="#">Graduate Attributes</a>
Duration full time: 4 years full time for Domestic and International students	
Duration part time: Not available part time	

Availability for international students	
Available to student visa holders and other eligible international students	
CRICOS code: 088106G	<a href="#">Visa information</a>

## What you'll study

The Bachelor of Applied Science (Exercise Physiology) course is a 4 year-full time degree which consists of 156 credit points of core units of study and 36 credit points of elective units of study. Electives can be chosen from a range of specialised units of study, from the Open Learning Environment and from across the University.

Through over 500 hours of clinical placement you will learn to apply your knowledge and gain significant practical experience, working with a range of different clients in numerous settings such as gyms, hospitals and on-site clinics.

[less information](#)

[Units of Study](#)



## Transition to Camperdown

We're moving to the Camperdown campus in 2021, and we've begun the transition. In some semesters, students will have classes at both the Cumberland and Camperdown campuses. Classes will be timetabled to allow students with a standard enrolment pattern to come to a single campus each day, where possible.

A minimum result of 96 overall including a minimum result of 20 in Reading, Listening and Speaking and 22 in Writing

Find out if you need to prove [English language proficiency](#) (depends on your country of origin and educational background).

## Your fee

**Student Contribution Amount (SCA) for year 1: \$6,566** (indicative only)

For Commonwealth Supported students commencing this course, the indicative SCA for Year 1 of full-time study of 48 credit points (1.0 EFTSL).

The SCA that you will pay depends on the calendar year in which you undertake your study in the course, and the specific units of study in which you enrol.

**This amount is subject to annual increase each year of your study (subject to a maximum amount determined by the Australian Government), effective at the start of each calendar year. Please read carefully the 'Important Fee Information' section set out below.**

## Your funding & scholarships

[Learn more](#)



## How to apply

Prospective domestic students apply through the Universities Admissions Centre (UAC) for a [Commonwealth supported place](#). Refer to the [UAC website](#) for key dates. Separate scholarship deadlines apply, visit the [scholarships website](#) for details.

For other useful information, visit our [How to apply](#) page.

Current University of Sydney students applying to transfer from one bachelor's degree to another apply directly to the University. The exact process will depend on the course you are currently in and the course to which you wish to transfer. For more information visit the [Change your course](#) page.

Current students applying to transfer from a diploma to a bachelor's degree must apply through UAC.

[less information](#)

Refer to the [UAC website](#). Separate scholarship deadlines apply visit the [scholarships website](#) for details.

## Starting date

Semester 1 (February)

pattern to come to a single campus each day, where possible.

For example, the following units of study will be taught at the Camperdown/ Darlington campus in 2020:

Year	Unit of study
1	BIOS1170 Body Systems: Structure and Function BIOS1168 Functional Musculoskeletal Anatomy A BIOS1169 Functional Musculoskeletal Anatomy B
2	BIOS1171 Neuroscience
3	All units of study based at Cumberland campus
4	Some elective units may be offered at Camperdown campus

For further information about unit of study teaching locations, please refer to the [Health Sciences Handbook](#).

Apply



## Completion requirement

### Sample study plan

#### Bachelor of Applied Science (Exercise Physiology)

Year	Unit of study
1	Introduction to Exercise Science Fundamentals of Exercise Physiology Functional Musculoskeletal Anatomy A Functional Musculoskeletal Anatomy B Body Systems: Structure and Function Principles of Biomechanics Elective
2	Movement Analysis Exercise Training: Physiology and Biochemistry Psychology of Exercise and Physical Activity Exercise Programming and Delivery Physical Activity and Society Anatomical Analysis of Exercise Two electives
3	Advanced Exercise Programming and Delivery Practicum in Exercise Science 1 Nutrition for Exercise and Health Fundamental Musculoskeletal Practicum in Exercise Science 2 Exercise Physiology in Clinical Cases 1 Motor Control and Learning Elective
4	Exercise Physiology in Clinical Cases 2 and 3 Advanced Musculoskeletal Clinical Practice Unit A, B and C Professional Reflections in Exercise Physiology

[less information](#)

## Assumed knowledge

Mathematics and chemistry for both domestic and international applicants.

View the faculty handbook



## Admission criteria

Admission to this course is on the basis of the following requirements:

- a [secondary education qualification](#) such as the NSW Higher School Certificate (including national and international equivalents), or [approved higher education study](#), including approved preparation courses.
- [English language requirements](#) where these are not demonstrated by sufficient



---

qualifications taught in English.

The Bachelor of Applied Science (Exercise Physiology) course does not have a guaranteed ATAR. The ATAR information provided is an indication only and the actual required ATAR for entry may be higher or lower depending on student demand and availability of places in the course each year.

**Admission pathways** are open to domestic applicants on the basis of equity or other adjustment factors, including for Aboriginal and Torres Strait Islander applicants. For details, visit [admission pathways](#).

The University of Sydney welcomes and encourages applications from students with disabilities, and from diverse social and cultural backgrounds. The University will make reasonable adjustments to assist students in meeting the inherent requirements.

## Inherent requirements

Inherent requirements are the essential tasks and activities necessary to be able to achieve the core learning outcomes of a course. They are specific to a particular course or discipline. To assist students to make informed choices about their study, we have identified and set out the [inherent requirements for this course](#).

## Course opportunities

Eligible candidates have the opportunity to take part in the [FHS Abroad program](#) which involves academic study and a four to six-week placement with non-government organisations and other development agencies in one of a small number of countries in South and South East Asia. This 6 credit point elective unit of study is available to candidates in their senior years and offers a hands-on understanding of global health challenges in an overseas community through work with two well established Australian volunteer agencies.

## Professional accreditation

The Bachelor of Applied Science (Exercise Physiology) is currently under consideration for qualifying accreditation with [Exercise and Sports Science Australia](#) (ESSA) at the level of exercise science and exercise physiology. Accredited exercise physiologists are eligible to provide services under Medicare, the Department of Veterans Affairs, WorkCover and private health insurance funds.

Following course completion and successful accreditation with ESSA as an Accredited Exercise Physiologist (AEP), you will have the opportunity to work across all sectors of healthcare, including cardiac rehabilitation, musculoskeletal rehabilitation, mental health, long-term rehabilitation following spinal cord injury, ageing, occupational rehabilitation and programs for people with an intellectual disability.

---

## Careers & future study

### Career pathways

Graduates of the Bachelor of Applied Science (Exercise Physiology) have broad employment opportunities. Popular career paths include:

- Exercise rehabilitation
- Prevention and management of chronic diseases
- Medical scientist
- Community health promotion
- Occupational health and safety and injury prevention (occupational ergonomics)
- Sport scientist
- Strength and conditioning coach or trainer
- Fitness industry
- Personal fitness promotion

### Honours

Honours can broaden your career options and is your pathway to a higher degree by research in the health sciences. Honours study allows you to specialise in an area of personal interest, develop your research skills and make a significant contribution to the development of knowledge within the profession. You will study under the supervision of an academic staff member.

Honours is available to exercise physiology students as an integrated pathway through the final three semesters of the degree. Students will receive an invitation from an academic coordinator to express their interest during the second semester of their

academic coordinator to express their interest during the second semester of their second year.

Entry into honours is competitive and based on students' past academic performance. For more information about honours, see our [honours website](#).

## Future study options

Graduates who do not choose the honours pathway and wish to further their study in this area may consider a higher degree by research including the Doctor of Philosophy or Master of Applied Science.

## Student profile

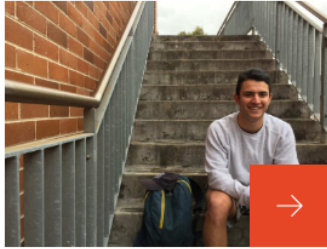
### Matthew Craig

"I have a love of sport and exercise, as well as a desire to help people. The wide range of subjects and clinical placements that I have undertaken has allowed me to gain a better idea of what areas I may be interested in working in post graduation.

I am really enjoying the relaxed, friendly nature of the faculty, and the reputation and experience of the majority of the staff."



### News\_



## I study exercise physiology: Joshua Joseph

▲  
We caught up with Bachelor of Applied Science (Exercise Physiology) student Joshua Joseph to find out what it's really like studying his degree.



### News\_



## 5 reasons why allied health could be the future

▲  
Find out more about a career in allied health and what this might mean for your future job prospects.



## The Sydney Experience



# Start your journey at the University of Sydney

The Sydney Undergraduate Experience



## Important fee information



### Domestic students

#### Indicative Undergraduate Student Contribution Amount

The student contribution amount for a Commonwealth Supported Place is an indication only of the amount payable in Year 1 for a standard full time load of 48 credit points (1.0 EFTSL). The exact student contribution that you pay will depend on the calendar year in which you undertake your study in the course, and the specific units of study in which you enrol. For further information about how to calculate your specific total student contribution, please refer to the University's [Tuition Fees website](#).

#### Annual review and fee increases

Importantly, student contribution amounts are subject to annual review by the University, and will increase each year of your period of study (subject to a Commonwealth specified cap), effective at the start of each calendar year.

#### Additional incidental costs

Please note that for some courses there are additional costs in addition to the student contribution. Some of these additional costs are significant, for example, course-specific materials, tools, protective clothing, and equipment. Please consult the University's web page for more information: <https://sydney.edu.au/students/materials-and-equipment.html>.

#### Visa/MasterCard/American Express/JCB surcharge

Please note that a surcharge of 1.53% will apply for payments made by Visa, MasterCard, American Express or JCB. The surcharge is subject to review and may change. Information about payment methods and the surcharge is set out at: <http://sydney.edu.au/study/finances-fees-costs/fees-and-loans/paying-your-fees.html>.

#### Potential for inaccuracy

Whilst every reasonable effort has been made to include correct and up to date information here, you are also advised to consult directly with the Student Centre so that they can provide you with specific and up to date information about fees.

### International students

#### Indicative International Tuition Fees for Undergraduate Students

The tuition fee for international undergraduate students is an indication of the fees payable in Year 1 for a standard full time load of 48 credit points (1.0 EFTSL). Depending on the calendar year in which you undertake your study,

and if your study load is more or less than the 1.0 EFTSL, your tuition fee will differ from the indicative amount. For further information about how to calculate your specific total tuition fees, please refer to the University's [Tuition Fees website](#)

### Annual review and fee increases

Importantly, tuition fees are subject to annual review, and will increase each year of your period of study, effective at the start of each calendar year.

### Additional incidental costs and health insurance

For some courses there are incidental costs additional to the tuition fees. Some of these incidental costs are significant, for example, course-specific materials, tools, protective clothing, and equipment. Further information about these costs is available from <https://sydney.edu.au/students/materials-and-equipment.html>. In addition to the fees indicated here for the course of study, International Students studying on an Australian Student Visa must have appropriate health insurance for the duration of their studies on a Student Visa through a government approved provider of the Overseas Student Health Cover (OSHC) scheme. This is a requirement of the Australian Government, unless otherwise exempted by the Government. Further information is available from <https://sydney.edu.au/study/finances-fees-costs/living-costs/health-insurance.html>.

### Visa/MasterCard/American Express/JCB surcharge

Please note that a surcharge of 1.53% will apply for payments made by Visa, MasterCard, American Express or JCB. The surcharge is subject to review and may change. Information about payment methods and the surcharge is set out at: <http://sydney.edu.au/study/finances-fees-costs/fees-and-loans/paying-your-fees.html>.

### Potential for inaccuracy

Whilst every reasonable effort has been made to include correct and up to date information here, you are also advised to consult directly with the [Student Centre](#) so that they can provide you with specific and up to date information about fees.

## Disclaimer

The course information on this website applies only to future students. Current students should refer to faculty handbooks for current or past course information.



To help you understand common terms that we use at the University, we offer an [online glossary](#).



Follow us -

## Media

[News](#)  
[Find an expert](#)  
[Media contacts](#)

## Student links

[How to log in to University systems](#)  
[Key dates](#)  
[Class timetables](#)  
[Libraries](#)

## About us

[Our rankings](#)  
[Faculties and schools](#)  
[Centres and institutes](#)  
[Campus locations](#)  
[Maps and locations](#)

## Connect

[Contact us](#)  
[Find a staff member](#)  
[Careers at Sydney](#)  
[Events](#)  
[Emergencies and personal safety](#)

Member of



[Disclaimer](#)

[Privacy](#)

[Accessibility](#)

[Website feedback](#)

ABN: 15 211 513 464  
CRICOS Number: 00026A  
TEQSA: PRV12057

Courses\_

# Bachelor of Applied Science (Occupational Therapy)

Share



Find out about the Bachelor of Applied Science (Occupational Therapy)

About us

## Global leaders in health education

### No. 1 in Australia

The University is ranked first in Australia and fifth in the world for graduate employability in the QS Graduate Employability Rankings 2019.

Find out more. →

### Known for excellence

The University is a world leader in health science research and education. All our research is ranked at world standard or above

Find out more. →

## Overview

**The Bachelor of Applied Science (Occupational Therapy) will enable you to help people with disabilities, and those recovering from injury or with ongoing conditions to overcome barriers that may be preventing them from participating more fully in life.**

As an occupational therapy student, you will combine practical learning with extensive clinical placements to aid recovery and skill development. Occupational therapists work with individuals and groups of all ages and needs in a variety of settings including hospitals, rehabilitation centres, private practice and community centres. They also work in non-traditional areas such as early intervention, health promotion, education, consultancy, industry and accessibility.

Through over 1,000 hours of supervised clinical placement, you will gain hands-on experience with real clients, learning how to put your theoretical knowledge into practice.

## Why study with us?

1. You'll gain real-world, hands-on training through clinical placements within our extensive network of clinical partners.
2. You'll learn from highly respected practitioners, clinicians and researchers.

Apply →

Ask a question →

The information on this page applies to prospective students. Current students should refer to their faculty handbooks for course information. →

## Admission, fees and how to apply

Depends on your qualification, citizenship status

I would like to start study in

2019

My qualification is from

AUSTRALIA

Domestic A...

I am

an Australian citizen (i...

The details on this page based on your selections are a guide only, and are subject to change.

## Admission information

Admission criteria - Check ATAR/IB or equivalent score →

Most courses will have a [guaranteed ATAR](#) or entry score. If a score is not listed as guaranteed, an entry score will be provided as a guide.

Check the 'Admission criteria' section on this page for other important requirements that may apply to the course. For more on admissions see [undergraduate admission criteria](#).

View most recent [student and ATAR admission profiles](#).

Admission pathways →

ATAR explained →

## English language proficiency

TOEFL - IBT score

A minimum result of 96 overall including a minimum result of 23 in Reading, Listening and Speaking and 25 in Writing



3. With a multidisciplinary focus, we prepare graduates with generalist and specialist healthcare knowledge and skills.
4. Our research ranks "well above world class" (Excellence in Research for Australia level 5).
5. We offer a range of leadership and student support programs to give you the best possible opportunity for success.
6. We have world-class facilities, with purpose-built laboratories and on-site health clinics.
7. In 2021, we will move to the purpose-built [Health Precinct](#) at Camperdown campus, which will for the first time bring multiple health disciplines together in a facility that translates research into education and clinical services.

[less information](#)

Course details	
Faculty/University School: Faculty of Health Sciences	
Credit points required: 192	Course abbreviation: BAppSc (OT)
USyd code: BPASOCTE5000	UAC code: 513635
Study mode: On-campus day	Study type: UGCW
Location: Camperdown/Darlington campus	<a href="#">Graduate Attributes</a>
Duration full time: 4 years full time for Domestic and International students	
Duration part time: Not available part time	

Availability for international students	
Available to student visa holders and other eligible international students	
CRICOS code: 063849G	<a href="#">Visa information</a>

## What you'll study

You will follow a prescribed course of study with a total of 192 credit points (CP) to qualify for the award of the Bachelor of Applied Science (Occupational Therapy) degree. The course consists of 156cp of core units and 36CP of elective units, including a minimum of 6cp from the Behavioural or Social Sciences and 6cp from the Biomedical Sciences

You will undertake professional practice during the course of your study. The placements occur during semester time and during recess periods at all level of the course, and are located in both metropolitan, country facilities and, in some cases, overseas facilities.

Refer to faculty handbook for elective choices.

Please note: in some semesters, students will have classes at both Cumberland and Camperdown campuses. Classes will be timetabled to allow students with a standard enrolment pattern to come to a single campus each day.

[less information](#)

Units of Study



## Transition to Camperdown

We're moving to Camperdown campus in 2021, and we've begun the transition. In some semesters, students will have classes at both the Cumberland and Camperdown campuses. Classes will be timetabled to allow students with a standard enrolment pattern to come to a single campus each day where possible.

For example, the following units of study will be taught at Camperdown/Darlington campus:

Year	Units of study
Year 1	R10S1148 Functional Musculoskeletal Anatomy A Semester 1

Find out if you need to prove [English language proficiency](#) (depends on your country of origin and educational background).

## Your fee

**Student Contribution Amount (SCA) for year 1:**  
**\$9,359** (indicative only)

For Commonwealth Supported students commencing this course, the indicative SCA for Year 1 of full-time study of 48 credit points (1.0 EFTSL).

The SCA that you will pay depends on the calendar year in which you undertake your study in the course, and the specific units of study in which you enrol.

**This amount is subject to annual increase each year of your study (subject to a maximum amount determined by the Australian Government), effective at the start of each calendar year.**

**Please read carefully the 'Important Fee Information' section set out below.**

Join a webinar to find out more about our courses →

## How to apply

Prospective domestic students apply through the Universities Admissions Centre (UAC) for a [Commonwealth supported place](#). Refer to the [UAC website](#) for key dates. Separate scholarship deadlines apply, visit the [scholarships website](#) for details.

For other useful information, visit our [How to apply](#) page.

Current University of Sydney students applying to transfer from one bachelor's degree to another apply directly to the University. The exact process will depend on the course you are currently in and the course to which you wish to transfer. For more information visit the [Change your course](#) page.

Current students applying to transfer from a diploma to a bachelor's degree must apply through UAC.

[less information](#)

Refer to the [UAC website](#) for key dates.

Separate scholarship deadlines apply. Visit the [scholarships webpage](#) for details.

## Starting date

Semester 1 (February)

## Similar courses

### Medicine and Health

Year 1	Science Functional Musculoskeletal Anatomy A	Semester 1
	Some electives may be offered at Camperdown campus	Semester 2
Year 2	HSBH1003 Health, Behaviour and Society	Semester 1
	BIOS1171 Neuroscience	Semester 2
Year 3	Some electives may be offered at Camperdown campus	Semester 2
Year 4	Some elective units may be offered at Camperdown campus	Semester 1

Graduate Certificate in Cancer and Haematology Nursing	Graduate Certificate in Evidence-Based Complementary Medicines
Graduate Diploma in Science in Medicine (Sleep Medicine)	Master of Surgery (Endocrine Surgery)

## Sample study plan

### Bachelor of Applied Science (Occupational Therapy)

Year	Sem	Unit of study			
1	1	Analysing Occupations and Performance	Functional Musculoskeletal Anatomy A	Health Science and Research	Occupational Performance: Healthcare 1
	2	Professional Practice 1	Teaching Occupations and Performance	Understanding Occupation- People- Context	Elective (non-OT)
2	1	Health, Behaviour and Society	Neuroscience	Occupational Performance: Child and Family	Occupational Performance: Community
	2	Occupational Performance: Healthcare 2	Occupational Performance: Home and Family	Professional Practice 2	Elective (non-OT)
3	1	Professional Practice IIIA	Occupational Performance: Education	Occupational Performance: Retirement	
	2	Professional Practice IIIB	Occupational Performance: Productivity	Elective (non-OT)*	
4	1	Evaluation in Professional Practice	Health Promotion Through Occupation	Elective*	
	2	Professional Practice IV	Elective*	Elective*	

\* Students in the honours program enrol in three specific honours units (Honours A: Research Design, Honours B: Applied Research Skills and Honours C: Research Project) in years 3 and 4, in lieu of the elective units. Note that some of the core unit requirements for OT honours are also different.

[less information](#)

## Assumed knowledge

Biology is recommended

## Admission criteria

Admission to this course is on the basis of the following criteria:

- a [secondary education qualification](#) such as the NSW Higher School Certificate (including national and international equivalents), or [approved higher education study](#), including approved preparation courses.
- [English language requirements](#) where these are not demonstrated by sufficient qualifications taught in English.

The Bachelor of Applied Science (Occupational Therapy) course does not have a guaranteed ATAR. The ATAR information provided is an indication only and the actual

## Related articles

[5 reasons why allied health could be the future](#) →

[I study health at the University of Sydney](#) →

Apply →

required ATAR for entry may be higher or lower depending on student demand and availability of places in the course each year.

**Admission pathways** are open to domestic applicants on the basis of equity or other adjustment factors, including for Aboriginal and Torres Strait Islander applicants. For details, visit [admission pathways](#).

## Inherent Requirements

The University of Sydney welcomes and encourages applications from students with disabilities, and from diverse social and cultural backgrounds. Where there are physical, intellectual, cultural, religious or other factors that impact on a student's ability to meet the [inherent requirements](#), the University will make reasonable adjustments to assist the student to meet the requirements.

## Course opportunities

Professional practice is an integral part of the Bachelor of Applied Science (Occupational Therapy). These experiences provide candidates with an opportunity to practice skills and take responsibility commensurate with their background knowledge and level of development acquired during the course.

Our occupational therapy course requires students to participate in placements that occur during semester time and during recess periods, at all levels of the course, and are located in both metropolitan, country facilities and, in some cases, overseas facilities.

In addition, eligible candidates have the opportunity to take part in the [FHS Abroad](#) program which involves academic study and a four to six week placement with non-government organisations and other development agencies in one of a small number of countries in South and South East Asia. This 6 credit point elective unit of study is available to candidates in their senior years and offers a hands-on understanding of global health challenges in an overseas community through work with two well established Australian volunteer agencies.

## Professional accreditation

Graduates of the Bachelor of Applied Science (Occupational Therapy) course are eligible for membership of the Australian Association of Occupational Therapists (OT Australia) and the World Federation of Occupational Therapists.

---

## Careers & future study

### Future study options

### Career Pathways

- Occupational therapist in hospitals
- Occupational therapist in rehabilitation centres
- Private practice
- Community centres
- Early intervention
- Health promotion
- Education
- Consultancy
- Accessibility

Graduates also have the option of changing careers a number of times while staying within the same profession. For example, a therapist could commence a career working one-on-one with teens with spinal cord injury, then work with babies in neonatal intensive care.

## Honours

Honours can broaden your career options and is your pathway to a higher degree by research in the health sciences. Honours study allows you to specialise in an area of personal interest, develop your research skills and make a significant contribution to the development of knowledge within the profession. You will study under the supervision of an academic staff member.

Honours is available in occupational therapy as an integrated pathway through the final three semesters of the degree. Students will receive an invitation from an academic coordinator to express their interest during the second semester of their second year.

Placeholder text for a caption or footnote, not a student's name or affiliation.

entry into honours is competitive and based on students' past academic performance. For more information about honours, see our [honours website](#).

---

## **The Sydney Experience**

---



This is the University of Sydney

---

## **Important fee information**

---

### **Domestic students**

#### **Indicative Undergraduate Student Contribution Amount**

The student contribution amount for a Commonwealth Supported Place is an indication only of the amount payable in Year 1 for a standard full time load of 48 credit points (1.0 EFTSL). The exact student contribution that you pay will depend on the calendar year in which you undertake your study in the course, and the specific units of study in which you enrol. For further information about how to calculate your specific total student contribution, please refer to the University's [Tuition Fees website](#).

#### **Annual review and fee increases**

Importantly, student contribution amounts are subject to annual review by the University, and will increase each year of your period of study (subject to a Commonwealth specified cap), effective at the start of each calendar year.

#### **Additional incidental costs**

Please note that for some courses there are additional costs in addition to the student contribution. Some of these additional costs are significant, for example, course-specific materials, tools, protective clothing, and equipment. Please consult the University's web page for more information: <https://sydney.edu.au/students/materials-and-equipment.html>.

#### **Visa/MasterCard/American Express/JCB surcharge**

Please note that a surcharge of 1.53% will apply for payments made by Visa, MasterCard, American Express or JCB. The surcharge is subject to review and

may change. Information about payment methods and the surcharge is set out at: <http://sydney.edu.au/study/finances-fees-costs/fees-and-loans/paying-your-fees.html>.

### Potential for inaccuracy

Whilst every reasonable effort has been made to include correct and up to date information here, you are also advised to consult directly with the Student Centre so that they can provide you with specific and up to date information about fees.

## International students

### Indicative International Tuition Fees for Undergraduate Students

The tuition fee for international undergraduate students is an indication of the fees payable in Year 1 for a standard full time load of 48 credit points (1.0 EFTSL). Depending on the calendar year in which you undertake your study, and if your study load is more or less than the 1.0 EFTSL, your tuition fee will differ from the indicative amount. For further information about how to calculate your specific total tuition fees, please refer to the University's [Tuition Fees website](#)

### Annual review and fee increases

Importantly, tuition fees are subject to annual review, and will increase each year of your period of study, effective at the start of each calendar year.

### Additional incidental costs and health insurance

For some courses there are incidental costs additional to the tuition fees. Some of these incidental costs are significant, for example, course-specific materials, tools, protective clothing, and equipment. Further information about these costs is available from <https://sydney.edu.au/students/materials-and-equipment.html>. In addition to the fees indicated here for the course of study, International Students studying on an Australian Student Visa must have appropriate health insurance for the duration of their studies on a Student Visa through a government approved provider of the Overseas Student Health Cover (OSHC) scheme. This is a requirement of the Australian Government, unless otherwise exempted by the Government. Further information is available from <https://sydney.edu.au/study/finances-fees-costs/living-costs/health-insurance.html>.

### Visa/MasterCard/American Express/JCB surcharge

Please note that a surcharge of 1.53% will apply for payments made by Visa, MasterCard, American Express or JCB. The surcharge is subject to review and may change. Information about payment methods and the surcharge is set out at: <http://sydney.edu.au/study/finances-fees-costs/fees-and-loans/paying-your-fees.html>.

### Potential for inaccuracy

Whilst every reasonable effort has been made to include correct and up to date information here, you are also advised to consult directly with the [Student Centre](#) so that they can provide you with specific and up to date information about fees.

The course information on this website applies only to prospective students. Current students should refer to faculty handbooks for current or past course information.



To help you understand common terms that we use at the University, we offer an [online glossary](#).



*Leadership for good starts here*



FOLLOW US

#### Media

News  
Find an expert  
Media contacts

#### Student links

How to log in to University systems  
Key dates  
Class timetables  
Libraries

#### About us

Our rankings  
Faculties and schools  
Centres and institutes  
Campus locations  
Maps and locations

#### Connect

Contact us  
Find a staff member  
Careers at Sydney  
Events  
Emergencies and personal safety



[Disclaimer](#)

[Privacy](#)

[Accessibility](#)

[Website feedback](#)

ABN: 15 211 513 464  
CRICOS Number: 00026A  
TEQSA: PRV12057



Courses\_

# Bachelor of Applied Science (Physiotherapy)

Share



Learn more about the Bachelor of Applied Science (Physiotherapy)

About us

## Global leaders in health education

### No.1 in Australia

The University is ranked first in Australia and fifth in the world for graduate employability in the QS Graduate Employability Rankings 2019.

Find out more. →

### Top ranked in sport

The University is ranked second in Australia and fourth in the world for sport, physical therapy and rehabilitation in the QS Subject Rankings 2019.

Find out more. →

## Overview

**The Bachelor of Applied Science (Physiotherapy) will teach you how to assess, diagnose and treat people with movement problems caused by a wide variety of joint, muscle and nerve disorders. You will also learn how to help people avoid injuries and maintain a fit and healthy body.**

Learn through state-of-the-art simulations and practical experiences on how to employ a range of drug-free techniques to treat and prevent injuries. In addition to the high-profile sports side of physiotherapy, graduates also practice in roles that contribute significantly to the wider community, such as the management of neurological conditions, movement disorders, rehabilitation and recovery.

This course incorporates significant clinical and professional fieldwork opportunities, providing hands-on experience with real clients in a supervised environment.

## Why study with us?

1. You'll gain real-world, hands-on training through clinical placements within our extensive network of clinical partners.
2. You'll learn from highly respected practitioners, clinicians and

Apply →

Ask a question →

The information on this page applies to prospective students. Current students should refer to their faculty handbooks for course information. →

## Admission, fees and how to apply

Depends on your qualification, citizenship status

I would like to start study in

2019

My qualification is from

AUSTRALIA

Domestic A...

I am

an Australian citizen (i...

The details on this page based on your selections are a guide only, and are subject to change.

## Admission information

Admission criteria - Check ATAR/IB or equivalent score →

Most courses will have a **guaranteed ATAR** or entry score. If a score is not listed as guaranteed, an entry score will be provided as a guide.

Check the 'Admission criteria' section on this page for other important requirements that may apply to the course. For more on admissions see [undergraduate admission criteria](#).

View most recent [student and ATAR admission profiles](#).

Admission pathways →

ATAR explained →

## English language proficiency

TOEFL - IBT score

A minimum result of 96 overall including a minimum result of 23 in Reading, Listening and

researchers.

3. With a multidisciplinary focus, we prepare graduates with generalist and specialist healthcare knowledge and skills.
4. Our research ranks "well above world class" (Excellence in Research for Australia level 5).
5. We offer a range of leadership and student support programs to give you the best possible opportunity for success.
6. We have world-class facilities, with purpose-built laboratories and on-site health clinics.
7. In 2021, we will move to the purpose-built [Health Precinct](#) at Camperdown campus, which will for the first time bring multiple health disciplines together in a facility that translates research into education and clinical services.

[less information](#)

Course details	
Faculty/University School: Faculty of Health Sciences	
Credit points required: 192	Course abbreviation: BAppSc (Phy)
USyd code: BPASPHYS6000	UAC code: 513640
Study mode: On-campus day	Study type: UGCW
Location: Camperdown/Darlington campus	<a href="#">Graduate Attributes</a>
Duration full time: 4 years full time for Domestic and International students	
Duration part time: Not available part time	

Availability for international students	
Available to student visa holders and other eligible international students	
CRICOS code: 063847J	<a href="#">Visa information</a>

## What you'll study

You will follow a prescribed course of study with a total of 192 credit points to qualify for the award of the Bachelor of Applied Science (Physiotherapy) degree. The profession of physiotherapy is physically demanding and requires the development of a range of precise physical skills for its practice. You will be expected to carry out and have carried out upon yourself as simulated patients, examination and treatment procedures used by physiotherapists. You should be aware that such practical sessions may involve partial disrobing and that participation in these classes is a requirement of the course.

In addition, to undertake physiotherapy units of study, you will study units in exercise and sport science, behavioural and community health sciences and biomedical sciences, particularly in first and second years. You will complete five practicum placements during the third and fourth year of the course. All candidates undertake at least one rural and/or regional placement.

[less information](#)

Units of study



## Transition to Camperdown

We're moving to Camperdown campus in 2021, and we've begun the transition. In some semesters, students will have classes at both the Cumberland and Camperdown campuses. Classes will be timetabled to allow students with a standard enrolment pattern to come to a single campus each day, where possible.

For example, the following units of study will be taught at Camperdown/Darlington campus:

Year                      Units of study

Speaking and 25 in Writing

Find out if you need to prove [English language proficiency](#) (depends on your country of origin and educational background).

## Your fee

**Student Contribution Amount (SCA) for year 1:**  
**\$9,359** (indicative only)

For Commonwealth Supported students commencing this course, the indicative SCA for Year 1 of full-time study of 48 credit points (1.0 EFTSL).

The SCA that you will pay depends on the calendar year in which you undertake your study in the course, and the specific units of study in which you enrol.

**This amount is subject to annual increase each year of your study (subject to a maximum amount determined by the Australian Government), effective at the start of each calendar year. Please read carefully the 'Important Fee Information' section set out below.**

Join a webinar to find out more about our courses →

## How to apply

Prospective domestic students apply through the Universities Admissions Centre (UAC) for a [Commonwealth supported place](#). Refer to the [UAC website](#) for key dates. Separate scholarship deadlines apply, visit the [scholarships website](#) for details.

For other useful information, visit our [How to apply](#) page.

Current University of Sydney students applying to transfer from one bachelor's degree to another apply directly to the University. The exact process will depend on the course you are currently in and the course to which you wish to transfer. For more information visit the [Change your course](#) page.

Current students applying to transfer from a diploma to a bachelor's degree must apply through UAC.

[less information](#)

Refer to the [UAC website](#). Separate scholarship deadlines apply visit the [scholarships website](#) for details.

## Starting date

Semester 1 (February)

Apply →

Year 1	BIOS1168 Functional Musculoskeletal Anatomy A  BIOS1170 Body Systems: Structure and Function  HSBH1003 Health, Behaviour and Society  BIOS1169 Functional Musculoskeletal Anatomy B  BIOS1171 Neuroscience	Semester 1      Semester 2
Year 2	All units of study based at Cumberland campus	Semester 1 and Semester 2
Year 3	Some elective units may be offered at Camperdown campus	Semester 2
Year 4	Some elective units may be offered at Camperdown campus	Semester 1 and Semester 2

## Sample study plan

### Bachelor of Applied Science (Physiotherapy)

Year	Sem	Unit of study			
1	1	Body Systems: Structure and Function	Foundations of Physiotherapy Practice A	Functional Musculoskeletal Anatomy A	Health, Behaviour and Society
	2	Foundations of Physiotherapy Practice B	Functional Musculoskeletal Anatomy B	Muscle Adaptations to Use and Disuse	Neuroscience
2	1	Clinical Practicum A	PT in Musculoskeletal Conditions A	Exercise Physiology for Clinicians	Motor Control and Learning
	2	Preventative Health Care	PT in Musculoskeletal Conditions B	PT in Neurological Conditions A	PT in Respiratory and Cardiac Conditions A
3	1	Clinical Practicum B	Clinical Practicum C	Paediatric Physiotherapy	Physiotherapy in Multisystem Problems
	2	PT in Musculoskeletal Conditions C	PT in Neurological Conditions B	PT in Respiratory and Cardiac Conditions B	Elective*
4	1	Advanced Professional Practice A	Clinical Practicum F	Physiotherapy in Sport and Recreation	Physiotherapy Practicum D
	2	Advanced Professional Practice B	Physiotherapy Practicum E	Elective*	Elective*

\* Students enrolled in the honours program enrol in three specific honours units (A, B and C) in years three and four in lieu of the elective units.

[less information](#)

## Assumed knowledge

Physics and chemistry. Mathematics is recommended and bridging courses are available.

## Admission criteria

Admission to this course is on the basis of the following criteria:

- a [secondary education qualification](#) such as the NSW Higher School Certificate (including national and international equivalents), or [approved higher education study](#), including approved preparation courses.
- [English language requirements](#) where these are not demonstrated by sufficient qualifications taught in English.

The Bachelor of Applied Science (Physiotherapy) course does not have a guaranteed ATAR. The ATAR information provided is an indication only and the actual required ATAR for entry may be higher or lower depending on student demand and availability of places in the course each year.

**Admission pathways** are open to domestic applicants on the basis of equity or other adjustment factors, including for Aboriginal and Torres Strait Islander applicants. For details, visit [admission pathways](#).

## Inherent Requirements

The University of Sydney welcomes and encourages applications from students with disabilities, and from diverse social and cultural backgrounds. Where there are physical, intellectual, cultural, religious or other factors that impact on a student's ability to meet the [inherent requirements](#), the University will make reasonable adjustments to assist the student to meet the requirements.

## Course opportunities

Students will undertake clinical placements in NSW Health facilities in the Sydney metropolitan area, rural areas and or outer Sydney as well as private practices and community facilities. All candidates undertake at least one rural and/or regional placement. You will complete five practicum placements in three of the four five-week block placements in Semester 2 of third year, and two of the four five-week blocks in Semester 1 of fourth year.

In addition, eligible candidates have the opportunity to take part in the [FHS Abroad](#) program which involves academic study and a four to six week placement with non-government organisations and other development agencies in one of a small number of countries in South and South East Asia. This 6 credit point elective unit of study is available to candidates in their senior years and offers a hands-on understanding of global health challenges in an overseas community through work with two well established Australian volunteer agencies.

## Professional accreditation

This course is accredited by the Australian Physiotherapy Council (APC). Graduates are eligible to apply for registration as physiotherapists with the Physiotherapy Board of Australia (PBA), overseen by the Australian Health Practitioner Regulation Agency (AHPRA).

---

## Career outcomes

### Career Pathways

- Physiotherapist
- Public and private sector
- Health care organisations
- Sports industry
- Schools and community
- Private practices
- Health education

## Honours

Honours can broaden your career options and is your pathway to a higher degree by research in the health sciences. Honours study allows you to specialise in an area of personal interest, develop your research skills and make a significant contribution to the development of knowledge within the profession. You will study under the supervision of an academic staff member.

Honours is available in physiotherapy as an integrated pathway through the final three semesters of the degree. Students will receive an invitation from an academic coordinator to express their interest during the second semester of their second year.

Entry into honours is competitive and based on students' past academic performance. For more information about honours, see our [honours website](#).



Careers\_

## Graduate profile

Phil Coles

"I went to the FIFA World Cup as head of physiotherapy with the Socceroos, attended the Carling Cup and the FA Cup as head of physiotherapy for Liverpool Football Club (in the UK), was part of the team that saw the Newcastle Knights get through to the National Rugby League grand-final qualifier and worked with the San Antonio Spurs."



---

## The Sydney Experience



The Sydney Undergraduate Experience



---

## Important fee information



Domestic students

Indicative Undergraduate Student Contribution Amount

The student contribution amount for a Commonwealth Supported Place is an indication only of the amount payable in Year 1 for a standard full time load of 48 credit points (1.0 EFTSL). The exact student contribution that you pay will depend on the calendar year in which you undertake your study in the course, and the specific units of study in which you enrol. For further information about how to calculate your specific total student contribution, please refer to the University's [Tuition Fees website](#).

### **Annual review and fee increases**

Importantly, student contribution amounts are subject to annual review by the University, and will increase each year of your period of study (subject to a Commonwealth specified cap), effective at the start of each calendar year.

### **Additional incidental costs**

Please note that for some courses there are additional costs in addition to the student contribution. Some of these additional costs are significant, for example, course-specific materials, tools, protective clothing, and equipment. Please consult the University's web page for more information: <https://sydney.edu.au/students/materials-and-equipment.html>.

### **Visa/MasterCard/American Express/JCB surcharge**

Please note that a surcharge of 1.53% will apply for payments made by Visa, MasterCard, American Express or JCB. The surcharge is subject to review and may change. Information about payment methods and the surcharge is set out at: <http://sydney.edu.au/study/finances-fees-costs/fees-and-loans/paying-your-fees.html>.

### **Potential for inaccuracy**

Whilst every reasonable effort has been made to include correct and up to date information here, you are also advised to consult directly with the Student Centre so that they can provide you with specific and up to date information about fees.

## **International students**

### **Indicative International Tuition Fees for Undergraduate Students**

The tuition fee for international undergraduate students is an indication of the fees payable in Year 1 for a standard full time load of 48 credit points (1.0 EFTSL). Depending on the calendar year in which you undertake your study, and if your study load is more or less than the 1.0 EFTSL, your tuition fee will differ from the indicative amount. For further information about how to calculate your specific total tuition fees, please refer to the University's [Tuition Fees website](#)

### **Annual review and fee increases**

Importantly, tuition fees are subject to annual review, and will increase each year of your period of study, effective at the start of each calendar year.

### **Additional incidental costs and health insurance**

For some courses there are incidental costs additional to the tuition fees. Some of these incidental costs are significant, for example, course-specific materials, tools, protective clothing, and equipment. Further information about these costs is available from



<https://sydney.edu.au/students/materials-and-equipment.html>. In addition to the fees indicated here for the course of study, International Students studying on an Australian Student Visa must have appropriate health insurance for the duration of their studies on a Student Visa through a government approved provider of the Overseas Student Health Cover (OSHC) scheme. This is a requirement of the Australian Government, unless otherwise exempted by the Government. Further information is available from <https://sydney.edu.au/study/finances-fees-costs/living-costs/health-insurance.html>.

### Visa/MasterCard/American Express/JCB surcharge

Please note that a surcharge of 1.53% will apply for payments made by Visa, MasterCard, American Express or JCB. The surcharge is subject to review and may change. Information about payment methods and the surcharge is set out at: <http://sydney.edu.au/study/finances-fees-costs/fees-and-loans/paying-your-fees.html>.

### Potential for inaccuracy

Whilst every reasonable effort has been made to include correct and up to date information here, you are also advised to consult directly with the [Student Centre](#) so that they can provide you with specific and up to date information about fees.

## Disclaimer

The course information on this website applies only to prospective students. Current students should refer to faculty handbooks for current or past course information.



To help you understand common terms that we use at the University, we offer an [online glossary](#).



THE UNIVERSITY OF  
SYDNEY

*Leadership for good starts here*



Follow us -

#### Media

News  
Find an expert  
Media contacts

#### Student links

How to log in to University systems  
Key dates  
Class timetables  
Libraries

#### About us

Our rankings  
Faculties and schools  
Centres and institutes  
Campus locations  
Maps and locations

#### Connect

Contact us  
Find a staff member  
Careers at Sydney  
Events  
Emergencies and personal safety



[Disclaimer](#)

[Privacy](#)

[Accessibility](#)

[Website feedback](#)

ABN: 15 211 513 464  
CRICOS Number: 00026A  
TEQSA: PRV12057

Courses\_

# Bachelor of Applied Science (Speech Pathology)

Share 

THE UNIVERSITY OF SYDNEY

**Antonia Chacon**  
Bachelor of Applied Science (Speech Pathology)  
Honours student

▲ Study Speech Language Pathology at the Faculty of Health Sciences

About us

## Global leaders in health education

### No. 1 in Australia

The University of Sydney is ranked first in Australia and fifth in the world for graduate employability in the QS Graduate Employability Rankings 2019.

Find out more →

### Known for excellence

The University is a world leader in health science research and education. All our research is ranked at world standard or above.

Find out more →

## Overview

Accredited by Speech Pathology Australia, the Bachelor of Applied Science (Speech Pathology) prepares you for professional practice as a speech pathologist. You will be involved in the study and treatment of communication and speech disorders in children and adults, including problems with speaking, comprehension, reading, writing, voice problems and stuttering.

During this four year degree you will:

- Learn from leading experts researching in a range of specialist areas in communication sciences and disorders.
- Experience hands-on learning and clinical practice. You will develop the ability to work with children and adults with communication difficulties caused by congenital or developmental problems, illness, and emotional or physical trauma.
- Study a wide-range of areas in speech therapy, including speech science, linguistics and phonetics, neuroscience, motor speech and dysphagia, and counselling and behaviour management for communication disorders.
- Observe clients in your first year before commencing clinical practice from your second year, practicing under supervision in the on-campus clinic, hospitals, community health centres, developmental disability services, schools and specialist clinics.

Apply →

Ask a question →

The information on this page applies to prospective students. Current students should refer to their faculty handbooks for course information. →

## Admission, fees and how to apply

Depends on your qualification, citizenship status

I would like to start study in

2019 ▼

My qualification is from

AUSTRALIA ▼

Domestic A... ▼

I am

an Australian citizen (i... ▼

The details on this page based on your selections are a guide only, and are subject to change.

## Admission information

Admission criteria - Check ATAR/IB or equivalent score →

Most courses will have a [guaranteed ATAR](#) or entry score. If a score is not listed as guaranteed, an entry score will be provided as a guide.

Check the 'Admission criteria' section on this page for other important requirements that may apply to the course. For more on admissions see [undergraduate admission criteria](#).

View most recent [student and ATAR admission profiles](#).

Admission pathways →

ATAR explained →

## English language proficiency

TOEFL - IBT score ▼

A minimum result of 96 overall including a minimum result of 23 in Reading, Listening and

## Why study with us?

1. You'll gain real-world, hands-on training through clinical placements within our extensive network of clinical partners.
2. You'll learn from highly respected practitioners, clinicians and researchers.
3. With a multidisciplinary focus, we prepare graduates with generalist and specialist healthcare knowledge and skills.
4. Our research ranks "well above world class" (Excellence in Research for Australia level 5).
5. We offer a range of leadership and student support programs to give you the best possible opportunity for success.
6. We have world-class facilities, with purpose-built laboratories and on-site health clinics.
7. In 2021, we will move to the purpose-built [Health Precinct](#) at Camperdown campus, which will for the first time bring multiple health disciplines together in a facility that translates research into education and clinical services.

[less information](#)

Course details	
Faculty/University School: Faculty of Health Sciences	
Credit points required: 192	Course abbreviation: BAppSc (SpPath)
USyd code: BPASSPPA6000	UAC code: 513645
Study mode: On-campus day	Study type: UGCW
Location: Camperdown/Darlington campus	<a href="#">Graduate Attributes</a>
Duration full time: 4 years full time for Domestic and International students	
Duration part time: Part time study available for eligible applicants (excluding international student visa holders)	

Availability for international students	
Available to student visa holders and other eligible international students	
CRICOS code: 012825D	<a href="#">Visa information</a>

## What you'll study

The Bachelor of Applied Science (Speech Pathology) is a four-year full-time which consists of 31 core units and 1 elective unit of study. You will complete 192 credit points to be awarded the degree.

From the second year of the course, you will have an opportunity to participate in a wide variety of practicum experiences as part of your clinical training placements. These occur on-campus and in off-campus placements in metropolitan and country areas and sometimes interstate and overseas.

Please note: your first year will be taught at Camperdown campus. In the first semester of second year, students will have classes at both Cumberland and Camperdown campuses. Classes will be timetabled to allow students with a standard enrolment pattern to come to a single campus each day, where possible.

[less information](#)

Units of Study



## Transition to Camperdown

We're moving to the Camperdown campus in 2021, and we've begun the transition.

## Speaking and 25 in Writing

Find out if you need to prove [English language proficiency](#) (depends on your country of origin and educational background).

## Your fee

**Student Contribution Amount (SCA) for year 1: \$9,359** (indicative only)

For Commonwealth Supported students commencing this course, the indicative SCA for Year 1 of full-time study of 48 credit points (1.0 EFTSL).

The SCA that you will pay depends on the calendar year in which you undertake your study in the course, and the specific units of study in which you enrol.

**This amount is subject to annual increase each year of your study (subject to a maximum amount determined by the Australian Government), effective at the start of each calendar year. Please read carefully the 'Important Fee Information' section set out below.**

[Join a webinar to find out more about our courses](#) →

## How to apply

Prospective domestic students apply through the Universities Admissions Centre (UAC) for a [Commonwealth...](#)

[more information](#)

Refer to the [UAC website](#) for key dates.

Separate scholarship deadlines apply. Visit the [scholarships webpage](#) for details.

## Starting date

Semester 1 (February)

## Related articles

[5 reasons why allied health could be the future](#) →  
[I study health at the University of Sydney](#) →

## Related courses

[Master of Speech Language Pathology](#) →

In some semesters, students will have classes at both the Cumberland and Camperdown campuses. Classes will be timetabled to allow students with a standard enrolment pattern to come to a single campus each day, where possible.

For example, the following units of study will be taught at Camperdown/Darlington campus:

Apply



Year	Units of study	
Year 1	BIOS1163 Speech Science  CSCD1034 Linguistics and Phonetics  HSBH1003 Health, Behaviour and Society  Some electives may be offered at Camperdown	Semester 1
	BIOS1165 Hearing Science and Audiology  BIOS1166 Neuroscience I: Communication Disorders  CSCD1032 Human Communication  CSCD1035 Stuttering	Semester 2
Year 2	BIOS2062 Neuroscience II: Communication Disorders	Semester 1
Year 3	All units of study based at Cumberland campus	Semester 1 and Semester 2
Year 4	All units of study based at Cumberland campus	Semester 1 and Semester 2

For further information about unit of study teaching locations, please refer to the [Health Sciences Handbook](#).

## Sample study plan

### Bachelor of Applied Science (Speech Pathology)

Year	Sem	Unit of study			
1	1	Foundations of Biomedical Science (or elective)	Hearing Science and Audiology	Human Communication	Linguistics and Phonetics
	2	Neuroscience 1: Communication Disorders	Speech Science	Stuttering	Health, Behaviour and Society
2	1	Child Language	Cognitive Neuropsychology	Introductory Practice 1: Clinical; or Introductory Practice 1: Community	Motor Speech and Dysphagia
	2	Introductory Practice 2: Clinical; or Introductory Practice 2: Community	Neuroscience II: Communication Disorders	Speech Sound Disorders	Voice and Voice Disorders
3	1	Counselling and Behaviour Management for Communication Disorders	Intermediate Clinic 1: Child; or Intermediate Clinic 1: Adult	Lifelong Disability and Augmentative and Alternative Communication	Neurogenic Language Disorders
		Intermediate Clinic 2: Adult and	Phonology,	Specialist	Speech Pathology

	2	Community; or Intermediate Clinic 2: Child and Community	Language and Literacy	Studies	Research Methods*
4	1	Evidence-Based Practice for Speech Pathology*	Advanced Practice: Adult	Advanced Practice: Clinical	
	2	Advanced Practice: Paediatric	Professional Issues*	Advanced Practice: Community	

\* Students in the honours program enrol in three specific honours units (Honours A: Research Design, Honours B: Applied Research Skills and Honours C: Research Project) in years 3 and 4, in lieu of these units. Note: some of the core unit requirements for honours are different.

[less information](#)

## Assumed knowledge

There is no assumed knowledge for this course.

## Admission criteria

Admission to this course is on the basis of the following criteria:

- a [secondary education qualification](#) such as the NSW Higher School Certificate (including national and international equivalents), or [approved higher education study](#), including approved preparation courses.
- [English language requirements](#) where these are not demonstrated by sufficient qualifications taught in English.

**Admission pathways** are open to domestic applicants on the basis of equity or other adjustment factors, including for Aboriginal and Torres Strait Islander applicants. For details, visit [admission pathways](#).

The Bachelor of Applied Science (Speech Pathology) course does not have a guaranteed ATAR. The ATAR information provided is an indication only and the actual required ATAR for entry may be higher or lower depending on student demand and availability of places in the course each year.

## Inherent Requirements

Inherent requirements are the essential tasks and activities necessary to be able to achieve the core learning outcomes of a course. They are specific to a particular course or discipline. To assist students to make informed choices about their study, we have identified and set out the [inherent requirements for this course](#).

## Course opportunities

Students in the Bachelor of Applied Science (Speech Pathology) course participate in a wide variety of practical experiences throughout their degree. Practical experiences occur on-campus and off-campus in metropolitan and country areas, and sometimes interstate and overseas.

In addition, eligible candidates have the opportunity to take part in the [FHS Abroad program](#) which involves academic study and a four to six week placement with non-government organisations and other development agencies in one of a small number of countries in South and South East Asia. This 6 credit point elective unit of study is available to candidates in their senior years and offers a hands-on understanding of global health challenges in an overseas community through work with two well established Australian volunteer agencies.

## Professional accreditation

Speech pathology courses are accredited by Speech Pathology Australia on a 5 year basis to ensure that the professional practice requirements of the profession are incorporated into courses and standards are maintained. Accreditation qualifies graduates to work as speech pathologists in Australia. The Bachelor of Applied Science (Speech Pathology) has been continuously accredited and is accredited until the end of 2019. During 2019 we will apply for accreditation for the following 5 years.

More information about accreditation can be obtained from [Speech Pathology Australia](#).



## Career outcomes

### Career Pathways

- Speech pathologist
- Hospital-based practice
- Private practice
- Schools
- Early childhood services
- Community health centres
- Rehabilitation centres
- Universities
- Senior citizen residences
- Centres for physically or developmentally disabled individuals

### Honours

Honours can broaden your career options and is your pathway to a higher degree by research in the health sciences. Honours study allows you to specialise in an area of personal interest, develop your research skills and make a significant contribution to the development of knowledge within the profession. You will study under the supervision of an academic staff member.

Honours is available in speech language pathology as an integrated pathway through the final three semesters of the degree. Students will receive an invitation from an academic coordinator to express their interest during the second semester of their second year.

Entry into honours is competitive and based on students' past academic performance. For more information about honours, see our [honours website](#).

### Graduate profile

Olivia Kai Li Yun

"I have always wanted to be in a profession that allowed me to work directly with members of the community. Language and communication have always intrigued me. Speech pathology was the perfect fit as I get to explore the intricacies of language and at the same time help those who require assistance and support in terms of communication"



News\_

#### **I study speech pathology: Meredith Munnoch**

What it's like studying speech pathology

Bachelor of Applied Science (Speech Pathology) student Meredith Munnoch takes us behind-the-scenes of life as a health sciences student, discussing her lectures, career aspirations and favourite subjects.



News\_

#### **Pathways to university: there are more than one**

How to find the right path to the right undergraduate degree

Between ATAR requirements, HSC exams, and comparing bachelor degrees, finishing year 12 can be overwhelming. But gaining entry into Uni may be easier than you think. Our students discuss their pathway to uni and their dream careers.







---

## **The Sydney Experience**

---



This is the University of Sydney

---

## **Important fee information**

---

### Domestic students

#### **Indicative Undergraduate Student Contribution Amount**

The student contribution amount for a Commonwealth Supported Place is an indication only of the amount payable in Year 1 for a standard full time load of 48 credit points (1.0 EFTSL). The exact student contribution that you pay will depend on the calendar year in which you undertake your study in the course, and the specific units of study in which you enrol. For further information about how to calculate your specific total student contribution, please refer to the University's [Tuition Fees website](#).

#### **Annual review and fee increases**

Importantly, student contribution amounts are subject to annual review by the University, and will increase each year of your period of study (subject to a Commonwealth specified cap), effective at the start of each calendar year.

#### **Additional incidental costs**

Please note that for some courses there are additional costs in addition to the student contribution. Some of these additional costs are significant, for example, course-specific materials, tools, protective clothing, and equipment. Please consult the University's web page for more information: <https://sydney.edu.au/students/materials-and-equipment.html>.

#### **Visa/MasterCard/American Express/JCB surcharge**

Please note that a surcharge of 1.53% will apply for payments made by Visa, MasterCard, American Express or JCB. The surcharge is subject to review and may change. Information about payment methods and the surcharge is set out at: <http://sydney.edu.au/study/finances-fees-costs/fees-and-loans/paying-your-fees.html>.

### **Potential for inaccuracy**

Whilst every reasonable effort has been made to include correct and up to date information here, you are also advised to consult directly with the Student Centre so that they can provide you with specific and up to date information about fees.

## **International students**

### **Indicative International Tuition Fees for Undergraduate Students**

The tuition fee for international undergraduate students is an indication of the fees payable in Year 1 for a standard full time load of 48 credit points (1.0 EFTSL). Depending on the calendar year in which you undertake your study, and if your study load is more or less than the 1.0 EFTSL, your tuition fee will differ from the indicative amount. For further information about how to calculate your specific total tuition fees, please refer to the University's [Tuition Fees website](#)

### **Annual review and fee increases**

Importantly, tuition fees are subject to annual review, and will increase each year of your period of study, effective at the start of each calendar year.

### **Additional incidental costs and health insurance**

For some courses there are incidental costs additional to the tuition fees. Some of these incidental costs are significant, for example, course-specific materials, tools, protective clothing, and equipment. Further information about these costs is available from <https://sydney.edu.au/students/materials-and-equipment.html>. In addition to the fees indicated here for the course of study, International Students studying on an Australian Student Visa must have appropriate health insurance for the duration of their studies on a Student Visa through a government approved provider of the Overseas Student Health Cover (OSHC) scheme. This is a requirement of the Australian Government, unless otherwise exempted by the Government. Further information is available from <https://sydney.edu.au/study/finances-fees-costs/living-costs/health-insurance.html>.

### **Visa/MasterCard/American Express/JCB surcharge**

Please note that a surcharge of 1.53% will apply for payments made by Visa, MasterCard, American Express or JCB. The surcharge is subject to review and may change. Information about payment methods and the surcharge is set out at: <http://sydney.edu.au/study/finances-fees-costs/fees-and-loans/paying-your-fees.html>.

### **Potential for inaccuracy**

Whilst every reasonable effort has been made to include correct and up to date information here, you are also advised to consult directly with the [Student Centre](#) so that they can provide you with specific and up to date information about fees.

## Disclaimer

The course information on this website applies only to prospective students. Current students should refer to faculty handbooks for current or past course information.



To help you understand common terms that we use at the University, we offer an [online glossary](#).



THE UNIVERSITY OF  
SYDNEY

*Leadership for good starts here*



FOLLOW US \_

### Media

News

Find an expert

Media contacts

### Student links

How to log in to University systems

Key dates

Class timetables

Libraries

### About us

Our rankings

Faculties and schools

Centres and institutes

Campus locations

Maps and locations

### Connect

Contact us

Find a staff member

Careers at Sydney

Events

Emergencies and personal  
safety

Member of



[Disclaimer](#)

[Privacy](#)

[Accessibility](#)

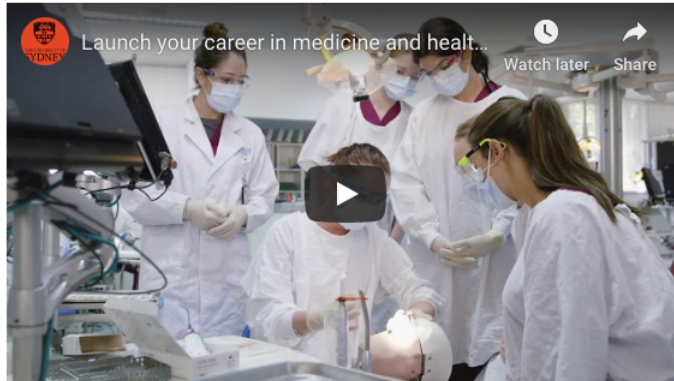
[Website feedback](#)

ABN: 15 211 513 464  
CRICOS Number: 00026A  
TEQSA: PRV12057

Courses\_

# Bachelor of Health Sciences (Honours)

Share



Launch your career in medicine and health...

Watch later

Share

Apply



Ask a question



The information on this page applies to prospective and current students. Current students should refer to their faculty handbooks for course information.



## Need help choosing a course?

Visit resource hub



Your research can help create a healthier society.

About us

### Global leaders in health education

#### No.1 in Australia

The University is ranked first in Australia and fifth in the world for graduate employability in the QS Graduate Employability Rankings 2019.

Find out more.



#### Top research university

The University is ranked in the top 50 of the world's best research universities. All our research is ranked at world standard or above.

Find out more.



Join or watch a webinar about this course



### Admission, fees and how to apply

Depends on your qualification, citizenship status

I would like to start study in

2019



My qualification is from

N/A



N/A



I am

an Australian citizen (i...



The details on this page based on your selections are a guide only, and are subject to change.

### Overview

Open to both internal and external applicants, the Bachelor of Health Sciences (Honours) program equips students with the knowledge and practical skills needed to produce high-quality research.

Gain an in-depth understanding of an aspect of your field and make a meaningful contribution to the field of knowledge. An honours degree can also launch a fulfilling career in research and academia and provides a common pathway to a PhD.

During this one-year degree, you will:

- learn how to plan, conduct and write up a research project, under the guidance of senior research scholars
- develop transferable skills and graduate attributes such as critical thinking, time management and communication
- push the frontiers of knowledge, develop and prove your critical abilities, and expand your career prospects.

### Important information

Entry to the honours program will commence in year 4. Students that are currently enrolled in the Bachelor of Health Sciences (base) degree will apply for

### Admission information

Admission pathways



ATAR explained



### English language proficiency

TOEFL - IBT score



A minimum result of 96 overall including a minimum result of 23 in Reading, Listening and Speaking and 25 in Writing

Find out if you need to prove [English language](#)

currently enrolled in the Bachelor of Health Sciences (pass) degree will apply for the additional fourth year. New external students from another academic institution or within the University of Sydney joining the honours program will complete one year, which comprises of the honours award.

Entry into honours is competitive and based on students' past academic performance. A Weighted Average Mark (WAM) of at least 65 is required to be eligible to apply for honours.

### Honours year in psychology

If you have completed the Psychology major within the Bachelor of Health Sciences 3 year degree program, and wish to pursue a career as a practicing registered psychologist in Australia, you need to seek enrolment in the fourth year Honours Program within the School of Psychology – either at the University of Sydney or other universities offering the Australian Psychology Accreditation Councils (APAC) fourth year course.

The Bachelor of Health Sciences (Honours) year is not accredited by APAC only the Psychology major for Years 1–3 is accredited by APAC and makes you eligible to apply for the fourth year Psychology Honours Program (normally offered only by psychology departments/schools within universities or private colleges of psychology training in Australia).

For more information on the fourth year Honours in Psychology at the University of Sydney and how to apply, please see the School of Psychology [website](#).

[less information](#)

Course details	
Faculty/University School: Faculty of Health Sciences	
Credit points required: 48	Course abbreviation: BHlthSci(Hons)
USyd code: BHHEASCH2000	UAC code: N/A
Study mode: On-campus day	Study type: HONS
Location: Cumberland campus	<a href="#">Graduate Attributes</a>
Duration full time: 1 year full time for Domestic and International students	
Duration part time: Not available part time	

Availability for international students	
Available to student visa holders and other eligible international students	
CRICOS code: 058961E	<a href="#">Visa information</a>

### Subject areas

Work and Organisational Studies (Honours subject area)

### What you'll study

The honours program includes lectures and seminars in addition to individual research project supervision meetings.

Honours subject areas can vary according to discipline and methodological approach. In Health Sciences, topics may focus on a particular area of healthcare practice or a topical health issue. Other projects may examine interventions or strategies that aim to improve health outcomes.

To get an idea of the previous honours projects in Health Sciences, please view our examples of [health sciences honours projects](#).

[less information](#)

[proficiency](#) (depends on your country of origin and educational background).

### Your fee

**Student Contribution Amount (SCA) for year 1: \$9,359** (indicative only)

For Commonwealth Supported students commencing this course, the indicative SCA for Year 1 of full-time study of 48 credit points (1.0 EFTSL).

The SCA that you will pay depends on the calendar year in which you undertake your study in the course, and the specific units of study in which you enrol.

**This amount is subject to annual increase each year of your study (subject to a maximum amount determined by the Australian Government), effective at the start of each calendar year. Please read carefully the 'Important Fee Information' section set out below.**

### How to apply

You can apply online via the application portal. When you are ready to apply, select the 'Apply' button on this course page. Visit the [How to apply](#) page for other important information.

[less information](#)

#### Application dates

#### Direct applicants:

**Applications open** – 3rd week of September 2018

**Applications close** – 11 January 2019

**Offers** – 18 January 2019

Due to the limited number of places available in this course, applications may close earlier if the course is full.

We strongly encourage applicants to apply as early as possible, offers are made on a rolling basis and places are limited. Separate scholarship deadlines apply – check the [scholarships website](#) for details.

#### Starting date

Semester 1 (February)

### Similar courses

#### Medicine and Health

Graduate Certificate in Cancer and Haematology

Graduate Certificate in Evidence-Based



## Sample study plan

### Bachelor of Health Sciences (Honours)

Year	Sem	Units of study
1	1	Honours semester one
	2	Honours semester two

[less information](#)

View the faculty handbook



## Admission requirements

### Internal and external applicants (both domestic and international)

To qualify for admission to the Honours year a candidate must have:

- qualified for the award of, or been awarded, the pass degree in Bachelor of Health Sciences, the University of Sydney; OR
- qualified for an award or been awarded an equivalent degree from within the University of Sydney; OR
- qualified for an award or been awarded an equivalent degree from another university; AND
- \* a Weighted Average Mark (WAM) of at least 65.

## Careers & future study

## Graduate opportunities

Your honours project will give you a springboard into your chosen career as you develop advanced research, analytic and communication skills while undertaking independent research.

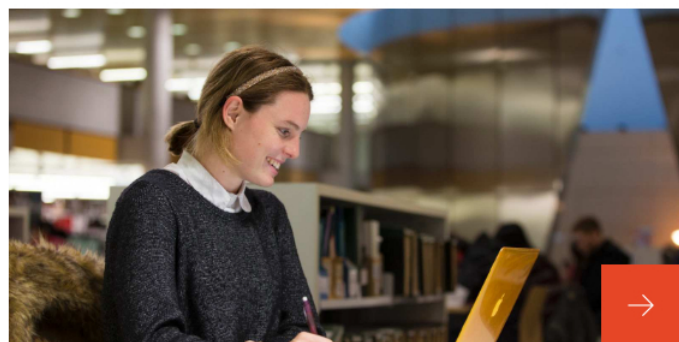
The Bachelor of Health Sciences (Honours) degree is your chance to become a member of a community of health professionals committed to moving their career forward through research.

Under a senior scholar, each student will develop research skills and make a significant contribution to the development of knowledge in their profession.

### Future study options

An honours degree from the Faculty of Health Sciences can also help improve your weighted average mark (WAM) for entry into graduate programs, and a successful honours result can be a pathway to PhD study.

### News\_



## 5 reasons why

▲ An honours degree is your next

Nursing

Complementary  
MedicinesGraduate Diploma in  
Science in Medicine  
(Sleep Medicine)Master of Surgery  
(Endocrine Surgery)



# 5 reasons why you should do a one-year honours degree at Sydney



step if you're seeking a competitive edge in your career, want to become an expert in your field or kickstart your pathway to a PhD.

---

## The Sydney Experience



Start your journey at the University of Sydney

The Sydney Undergraduate Experience



---

## Important fee information



### Domestic students

#### Indicative Undergraduate Student Contribution Amount

The student contribution amount for a Commonwealth Supported Place is an indication only of the amount payable in Year 1 for a standard full time load of 48 credit points (1.0 EFTSL). The exact student contribution that you pay will depend on the calendar year in which you undertake your study in the course, and the specific units of study in which you enrol. For further information about how to calculate your specific total student contribution, please refer to the University's [Tuition Fees website](#).

#### Annual review and fee increases

Importantly, student contribution amounts are subject to annual review by the University, and will increase each year of your period of study (subject to a Commonwealth specified cap), effective at the start of each calendar year.

## Additional incidental costs

Please note that for some courses there are additional costs in addition to the student contribution. Some of these additional costs are significant, for example, course-specific materials, tools, protective clothing, and equipment. Please consult the University's web page for more information: <https://sydney.edu.au/students/materials-and-equipment.html>.

## Visa/MasterCard/American Express/JCB surcharge

Please note that a surcharge of 1.53% will apply for payments made by Visa, MasterCard, American Express or JCB. The surcharge is subject to review and may change. Information about payment methods and the surcharge is set out at: <http://sydney.edu.au/study/finances-fees-costs/fees-and-loans/paying-your-fees.html>.

## Potential for inaccuracy

Whilst every reasonable effort has been made to include correct and up to date information here, you are also advised to consult directly with the Student Centre so that they can provide you with specific and up to date information about fees.

## International students

### Indicative International Tuition Fees for Undergraduate Students

The tuition fee for international undergraduate students is an indication of the fees payable in Year 1 for a standard full time load of 48 credit points (1.0 EFTSL). Depending on the calendar year in which you undertake your study, and if your study load is more or less than the 1.0 EFTSL, your tuition fee will differ from the indicative amount. For further information about how to calculate your specific total tuition fees, please refer to the University's [Tuition Fees website](#)

### Annual review and fee increases

Importantly, tuition fees are subject to annual review, and will increase each year of your period of study, effective at the start of each calendar year.

## Additional incidental costs and health insurance

For some courses there are incidental costs additional to the tuition fees. Some of these incidental costs are significant, for example, course-specific materials, tools, protective clothing, and equipment. Further information about these costs is available from <https://sydney.edu.au/students/materials-and-equipment.html>. In addition to the fees indicated here for the course of study, International Students studying on an Australian Student Visa must have appropriate health insurance for the duration of their studies on a Student Visa through a government approved provider of the Overseas Student Health Cover (OSHC) scheme. This is a requirement of the Australian Government, unless otherwise exempted by the Government. Further information is available from <https://sydney.edu.au/study/finances-fees-costs/living-costs/health-insurance.html>.

## Visa/MasterCard/American Express/JCB surcharge

Please note that a surcharge of 1.53% will apply for payments made by Visa, MasterCard, American Express or JCB. The surcharge is subject to review and may change. Information about payment methods and the surcharge is set out at: <http://sydney.edu.au/study/finances-fees-costs/fees-and-loans/paying-your-fees.html>.

## Potential for inaccuracy

Whilst every reasonable effort has been made to include correct and up to date information here, you are also advised to consult directly with the [Student Centre](#) so that they can provide you with specific and up to date information about fees.

## Disclaimer

The course information on this website applies only to prospective students. Current students should refer to faculty handbooks for current or past course information.



To help you understand common terms that we use at the University, we offer an [online glossary](#).



THE UNIVERSITY OF  
SYDNEY

*Leadership for good starts here*



Follow us

### Media

News  
Find an expert  
Media contacts

### Student links

How to log in to University systems  
Key dates  
Class timetables  
Libraries

### About us

Our rankings  
Faculties and schools  
Centres and institutes  
Campus locations  
Maps and locations

### Connect

Contact us  
Find a staff member  
Careers at Sydney  
Events  
Emergencies and personal safety



[Disclaimer](#)

[Privacy](#)

[Accessibility](#)

[Website feedback](#)

ABN: 15 211 513 464  
CRICOS Number: 00026A  
TEQSA: PRV12057