

Courses\_

# Bachelor of Arts and Master of Nursing

Share  

Discover nursing at Sydney

Why study with us?

## Global leaders in education

### #1 in Australia

The University is ranked first in Australia and fifth in the world for graduate employability in the QS Graduate Employability Rankings 2019.

### Our rankings

Our nursing courses are consistently ranked highly, both in Australia and internationally

Learn more



## Overview

**Make a lasting difference.** The combined Bachelor of Arts and Master of Nursing program develops analytical and critical capabilities alongside the skills and expertise you need to become a registered nurse. It opens up a wide range of career opportunities across both clinical and non-clinical settings.

As an arts and nursing student, you will learn from leaders in the humanities and healthcare disciplines, gaining a broad interdisciplinary knowledge alongside leadership and critical thinking skills. The Master of Nursing combines hands-on learning with more than 800 hours of clinical placements to develop a comprehensive understanding of professional nursing practice. You will learn to understand the impact of nursing practice within local and global health contexts, and across changing healthcare systems. Upon graduation you will be eligible to apply for registration with the Nursing and Midwifery Board of Australia.

Complementing your nursing studies, the Bachelor of Arts allows you to explore your passions, interests and ambitions as you develop all-round professional capabilities.

Offering broad choice across more than 45 subject areas in the humanities and social sciences, no two arts degrees are quite the same. You will study a major and a minor, choosing both from our broad choice across the humanities and social sciences, or selecting your minor from the [University's shared pool](#).

You can complete this combined degree program in four years of full-time

Apply



Ask a question



The information on this page applies to prospective students. Current students should refer to their faculty handbooks for course information.



## Bachelor of Advanced Studies

Supercharge your undergraduate degree



Dalyell Scholars program



## Admission, fees and how to apply

Depends on your qualification, citizenship status

I would like to start study in

2019



My qualification is from

AUSTRALIA



Domestic A...



I am

an Australian citizen (i...



The details on this page based on your selections are a guide only, and are subject to change.

## Admission information

Admission criteria - Check ATAR/IB or equivalent score



Most courses will have a [guaranteed ATAR](#) or entry score. If a score is not listed as guaranteed, an entry score will be provided as a guide.

Check the 'Admission criteria' section on this page for other important requirements that may apply to the course. For more on admissions see [undergraduate admission criteria](#).

View most recent [student and ATAR admission profiles](#).

Admission pathways



study, after which you will graduate with two qualifications. With a diverse range of experience and expertise, you will be highly employable in both clinical and non-clinical settings spanning nursing and healthcare, media and communications, government, community organisations and research.

Learn more about [nursing at Sydney Nursing School](#).

[less information](#)

Course details	
Faculty/University School: Faculty of Medicine and Health	
Credit points required: 192	Course abbreviation: BA/MN
USyd code: BPARTNUR1000	UAC code: 513740
Study mode: On-campus day	Study type: UGCW
Location: Camperdown/Darlington campus	<a href="#">Graduate Attributes</a>
Duration full time: 4 years full time for Domestic and International students	
Duration part time: Part time study available for eligible applicants (excluding international student visa holders)	

Availability for international students	
Available to student visa holders and other eligible international students	
CRICOS code: 069877K	<a href="#">Visa information</a>

## Subject areas

Completion of a Table A major in the Bachelor of Arts is a requirement of this combined degree. A major from Table A is offered by the Faculty of Arts and Social Sciences. For further information please refer to the Bachelor of Arts.

All
-----

Agricultural and Resource Economics (Major)	Agricultural and Resource Economics (Minor)	American Studies (Major)	American Studies (Minor)
Ancient Greek (Major)	Ancient Greek (Minor)	Ancient History (Major)	Ancient History (Minor)
Anthropology (Major)	Anthropology (Minor)	Arabic Language and Cultures (Major)	Arabic Language and Cultures (Minor)
Archaeology (Major)	Archaeology (Minor)	Art History (Major)	Art History (Minor)
Asian Studies (Major)	Asian Studies (Minor)	Australian Literature (Minor)	<a href="#">See more</a> +

## Shared pool

Accounting (Minor)	Agricultural and Resource Economics (Minor)	American Studies (Minor)	Anatomy and Histology (Minor)
Ancient Greek (Minor)	Ancient History (Minor)	Animal Health, Disease and Welfare (Minor)	Animal Production (Minor)

ATAR explained



## English language proficiency

TOEFL - IBT score



A minimum result of 96 overall including a minimum result of 23 in Reading, Listening and Speaking and 25 in Writing

Find out if you need to prove [English language proficiency](#) (depends on your country of origin and educational background).

## Your fee

**Student Contribution Amount (SCA) for year 1: \$6,566** (indicative only)

For Commonwealth Supported students commencing this course, the indicative SCA for Year 1 of full-time study of 48 credit points (1.0 EFTSL).

The SCA that you will pay depends on the calendar year in which you undertake your study in the course, and the specific units of study in which you enrol.

**This amount is subject to annual increase each year of your study (subject to a maximum amount determined by the Australian Government), effective at the start of each calendar year. Please read carefully the 'Important Fee Information' section set out below.**

You will be required to purchase a uniform that must be worn on clinical placements and you will need to factor in travel costs to clinical placements.

Join a webinar to find out more about this course



## How to apply

Prospective domestic students apply through the Universities Admissions Centre (UAC) for a [Commonwealth supported place](#). Refer to the [UAC website](#) for key dates. Separate scholarship deadlines apply, visit the [scholarships website](#) for details.

For other useful information, visit our [How to apply](#) page.

Current University of Sydney students applying to transfer from one bachelor's degree to another apply directly to the University. The exact process will depend on the course you are currently in and the course to which you wish to transfer. For more information visit the [Change your course](#) page.

Current students applying to transfer from a diploma to a bachelor's degree must apply through UAC.

[less information](#)

Refer to the [UAC website](#). Separate scholarship deadlines apply visit the [scholarships webpage](#) for details.

Anthropology (Minor)	Applied Medical Science (Minor)	Arabic Language and Cultures (Minor)	Archaeology (Minor)
Art History (Minor)	Asian Studies (Minor)	Australian Literature (Minor)	Biblical Studies and Classical Hebrew (Minor)
Biochemistry and Molecular Biology (Minor)	Biology (Minor)	Business Information Systems (Minor)	<a href="#">See more</a> +

### Starting date

Semester 1 (February)

## Course guides

[View our Faculty of Arts and Social Sciences Undergraduate Guide](#) →

## What you'll study

Units of Study



## Sample study plan

Bachelor of Arts and Master of Nursing

Year	Sem	Unit of study			
1	1	English Major	Economics Elective	Gender Studies Elective	Psychology Elective
	2	English Major	Economics Elective	Gender Studies Elective	Psychology Elective
2	1	English Major	The Body, Its Function and Pharmacology	Illness, Experience and Nursing Care	OLE (Cultural Competence: Fundamentals)
	2	English Major	Introduction to Nursing Practice	Understand Health and Managing Disease	OLE (Health Challenges: Allergy and Autoimmunity)
3	1	English Major	English Major	Social Contexts of Health	Nursing the Acutely Ill Person
	2	English Major	English Major	Developing Nursing Practice	Mental Health Nursing Practice
4	1	Care and Chronic Conditions	Leadership and Collaborative Practice	Community Health Nursing	Research and Evidence
	2	High Acuity Nursing	Health of Indigenous Populations (MN)	Australian Health Care - Global Context	Professional Practice (MN)

This is an indicative study plan only, students may choose other majors, minors and electives.

[less information](#)

## Assumed knowledge

Bachelor of Arts: Depends on the areas or units of study. For language studies: pathways are available for applicants with no prior language experience, as well as for those with prior experience in the respective language of study.

## Admission criteria

Admission to this course is on the basis of the following criteria:

- a [secondary education qualification](#) such as the NSW Higher School Certificate (including national and international equivalents) or [approved higher education](#)

Apply



## Related articles

[5 reasons to study nursing at the University of Sydney](#) →  
[I study health at the University of Sydney](#) →

including national and international equivalency or [approved English language study](#), including approved preparation courses.

- [English language requirements](#) where these are not demonstrated by sufficient qualifications taught in English.

**Admission pathways** are open to domestic applicants on the basis of equity or other adjustment factors, including for Aboriginal and Torres Strait Islander applicants. For details, visit [admission pathways](#).

It is required that applicants have the ability to undertake clinical placements and the School's Clinical Policy contains further details of the requirements. Please note this course is not available to applicants who are already registered to practise as a nurse in an Australian state or territory.

#### Inherent requirements

Inherent requirements are the essential tasks and activities necessary to be able to achieve the core learning outcomes of a course. They are specific to a particular course or discipline. To assist students to make informed choices about their study, we have identified and set out the [inherent requirements for this course](#).

## Course opportunities

The Master of Nursing component of this course requires completion of clinical placements that prepare graduates for professional practice. Students undertake more than 800 hours of clinical placements over their course of study and practise skills in the Sydney Nursing School's clinical laboratories and high fidelity simulation wards. During the final year of the course, students complete a four week clinical placement in an area in which they may choose to specialise in: paediatrics, mental health, high acuity, or clinical nursing. Due to the requirements of professional practice and the integrated structure of the course, exchange units of study in both arts and nursing are not available.

## Professional accreditation

Graduates of this course are eligible to apply for registration with the [Nursing and Midwifery Board of Australia](#), the accrediting body for professional nursing practice in Australia. In addition to nursing, students are encouraged to become members of professional associations concerned with their arts areas of study.

Association membership for students is often heavily discounted and may provide:

- opportunities for networking;
- conferences on topical issues providing local and international perspectives;
- research on areas of practice, quality and innovation;
- interest groups in specific areas of industry;
- regular journals and other publications;
- access to current salary information based on surveys conducted by the association;
- advice on workplace agreements;
- events offering professional development and ongoing learning: scholarships, awards and prizes;
- further study (including short courses, professional accreditation programs, or postgraduate qualifications).

Student profiles



## Careers & future study

### Career Pathways

Career opportunities in clinical settings include:

- Public and private hospitals
- Trauma and emergency care
- Mental health nursing
- Aged care
- Community nursing
- Home care nursing
- Drug and alcohol centres
- Rural and remote nursing
- Overseas aid

Career opportunities in non-clinical settings include:



Career opportunities in non-clinical settings include:

- Scientific, medical and pharmaceutical companies
- Health promotion
- Teaching
- Research
- Policy development

### Future study options

Sydney Nursing School offers a range of advanced learning postgraduate specialty nursing programs, including cancer and haematology nursing , clinical nursing , clinical trials practice , emergency nursing , intensive care nursing , mental health nursing and nurse practitioner. Eligible candidates may proceed to an honours year in the Bachelor of Arts, or apply for admission to a rich postgraduate program in the humanities and social sciences, comprising advanced learning and professional courses. Master's degrees include capstone projects ranging from internships with government and non-government organisations in Australia and overseas, the gallery and museum sector, and leading media organisations, to opportunities for independent research projects which prepare students for higher degrees by research.

---

## The Sydney Experience



The world is changing, and university education needs to change too

The Sydney Undergraduate Experience



---

## Important fee information

### Domestic students

#### Indicative Undergraduate Student Contribution Amount

The student contribution amount for a Commonwealth Supported Place is an indication only of the amount payable in Year 1 for a standard full time load of 48 credit points (1.0 EFTSL). The exact student contribution that you pay will depend on the calendar year in which you undertake your study in the course, and the specific units of study in which you enrol. For further information about how to calculate your specific total student contribution, please refer to the University's [Tuition Fees website](#).

#### Annual review and fee increases

Importantly, student contribution amounts are subject to annual review by the University, and will increase each year of your period of study (subject to a Commonwealth specified cap), effective at the start of each calendar year.

### **Additional incidental costs**

Please note that for some courses there are additional costs in addition to the student contribution. Some of these additional costs are significant, for example, course-specific materials, tools, protective clothing, and equipment. Please consult the University's web page for more information: <https://sydney.edu.au/students/materials-and-equipment.html>.

### **Visa/MasterCard/American Express/JCB surcharge**

Please note that a surcharge of 1.53% will apply for payments made by Visa, MasterCard, American Express or JCB. The surcharge is subject to review and may change. Information about payment methods and the surcharge is set out at: <http://sydney.edu.au/study/finances-fees-costs/fees-and-loans/paying-your-fees.html>.

### **Potential for inaccuracy**

Whilst every reasonable effort has been made to include correct and up to date information here, you are also advised to consult directly with the Student Centre so that they can provide you with specific and up to date information about fees.

## **International students**

### **Indicative International Tuition Fees for Undergraduate Students**

The tuition fee for international undergraduate students is an indication of the fees payable in Year 1 for a standard full time load of 48 credit points (1.0 EFTSL). Depending on the calendar year in which you undertake your study, and if your study load is more or less than the 1.0 EFTSL, your tuition fee will differ from the indicative amount. For further information about how to calculate your specific total tuition fees, please refer to the University's [Tuition Fees website](#)

### **Annual review and fee increases**

Importantly, tuition fees are subject to annual review, and will increase each year of your period of study, effective at the start of each calendar year.

### **Combined undergraduate degree tuition fees**

For international students, for combined undergraduate degrees, a single indicative course tuition fee applies for the duration of your study in the combined degree, regardless of the units of study that are undertaken as part of your combined degree. Importantly, the single indicative course tuition fee is subject to annual review, and will increase each year of your study in the combined degree.

### **Additional incidental costs and health insurance**

For some courses there are incidental costs additional to the tuition fees. Some of these incidental costs are significant, for example, course-specific materials, tools, protective clothing, and equipment. Further information about these costs is available from <https://sydney.edu.au/students/materials-and-equipment.html>. In addition to the fees indicated here for the course of study, International Students studying on an Australian Student Visa must have appropriate health insurance for the duration of their studies on a Student Visa through a

government approved provider of the Overseas Student Health Cover (OSHC) scheme. This is a requirement of the Australian Government, unless otherwise exempted by the Government. Further information is available from <https://sydney.edu.au/study/finances-fees-costs/living-costs/health-insurance.html>.

### Visa/MasterCard/American Express/JCB surcharge

Please note that a surcharge of 1.53% will apply for payments made by Visa, MasterCard, American Express or JCB. The surcharge is subject to review and may change. Information about payment methods and the surcharge is set out at: <http://sydney.edu.au/study/finances-fees-costs/fees-and-loans/paying-your-fees.html>.

### Potential for inaccuracy

Whilst every reasonable effort has been made to include correct and up to date information here, you are also advised to consult directly with the [Student Centre](#) so that they can provide you with specific and up to date information about fees.

## Disclaimer

The course information on this website applies only to prospective students. Current students should refer to faculty handbooks for current or past course information.



To help you understand common terms that we use at the University, we offer an [online glossary](#).



*Leadership for good starts here*



Follow us

#### Media

News  
Find an expert  
Media contacts

#### Student links

How to log in to University systems  
Key dates  
Class timetables  
Libraries

#### About us

Our rankings  
Faculties and schools  
Centres and institutes  
Campus locations  
Maps and locations

#### Connect

Contact us  
Find a staff member  
Careers at Sydney  
Events  
Emergencies and personal safety



[Disclaimer](#)

[Privacy](#)

[Accessibility](#)

[Website feedback](#)

ABN: 15 211 513 464  
CRICOS Number: 00026A  
TEQSA: PRV12057

Courses\_

# Bachelor of Nursing (Advanced Studies)

Share 

## Nursing at the University of Sydney

▲ Become the future of healthcare

About us

### Global leaders in health education

#### No. 1 in Australia

The University is ranked first in Australia and fifth in the world for graduate employability in the QS Graduate Employability Rankings 2019.

Find out more. →

#### Excellent in teaching and research

We are committed to preparing our graduates for the changing needs of healthcare and the increasing demand for nurses in Australia.

Learn more →

## Overview

The Bachelor of Nursing (Advanced Studies) develops a comprehensive understanding of professional nursing practice. Advanced studies underpin all elements of this program, cultivating leadership and enhancing your understanding of the international healthcare landscape.

Combining high-quality practical learning with extensive clinical placements, this degree will enable you to apply for registration with the [Nursing and Midwifery Board of Australia](#) and launch your career in healthcare.

Why study with us?

- Learn from our leading experts about human biology, physiology and pharmacology.
- Experience different areas of nursing including ageing, child and adolescent care, and mental health.
- Gain invaluable clinical experience with more than 800 hours of placements in a variety of settings including emergency departments, intensive care units, paediatric units, mental health facilities and community health centres.

With a wide and growing field of practice across the public and private

Apply →

Ask a question →

The information on this page applies to prospective students. Current students should refer to their faculty handbooks for course information. →

### Admission, fees and how to apply

Depends on your qualification, citizenship status

I would like to start study in

2019 ▼

My qualification is from

AUSTRALIA ▼

Domestic A... ▼

I am

an Australian citizen (i... ▼

The details on this page based on your selections are a guide only, and are subject to change.

### Admission information

Admission criteria - Check ATAR/IB or equivalent score →

Most courses will have a [guaranteed ATAR](#) or entry score. If a score is not listed as guaranteed, an entry score will be provided as a guide.

Check the 'Admission criteria' section on this page for other important requirements that may apply to the course. For more on admissions see [undergraduate admission criteria](#).

View most recent [student and ATAR admission profiles](#).

Admission pathways →

ATAR explained →

### English language proficiency

TOEFL - IBT score ▼

A minimum result of 96 overall including a minimum result of 23 in Reading, Listening and Speaking and 25 in Writing

healthcare systems, this degree will prepare you to thrive in both local and global health environments as you work with other health professionals to provide high-quality patient-centred care.

Learn more about [studying at Sydney Nursing School](#).

[less information](#)

Course details	
Faculty/University School: Faculty of Medicine and Health	
Credit points required: 144	Course abbreviation: BN (Advanced Studies)
USyd code: BPNURADS1000	UAC code: 513735
Study mode: On-campus day, Clinical experience	Study type: UGCW
Location: Camperdown/Darlington & Mallett Street campus	<a href="#">Graduate Attributes</a>
Duration full time: 3 years full time for Domestic and International students	
Duration part time: 6 years part time for Domestic students	

Availability for international students	
Available to student visa holders and other eligible international students	
CRICOS code: 074088G	<a href="#">Visa information</a>

## What you'll study

The Bachelor of Nursing (Advanced Studies) is a three-year full-time course consisting of 144 credit points. Students will complete 24 core units of study in the order predetermined (8 units of study each year).

The units of study are structured into four broad areas that are interwoven into learning experiences throughout the course and developed at successively more complex levels as students progress in their studies. These areas are:

- Underpinnings to Nursing Practice
- Health, Development and Assessment
- Contexts of Practice
- Nursing Practice.

In Underpinnings of Nursing Practice, students will engage with areas of study relating to human sciences and research.

In the Health, Development and Assessment area of study, units of study include:

- Health Assessment
- Child and Adolescent Health and Care
- Ageing Health and Care
- Understanding Experiences of Illness.

Students will be introduced to the knowledge and practices of person-centred health care in the Context of Practice area of study.

The Nursing Practice area of study includes units of study that are directly related to clinical nursing knowledge and practice.

## Clinical placements

Clinical experience makes up a key part of the course, with all students required to undertake approximately 900 hours of clinical placements in health care facilities monitored or operated by the NSW Department of Health throughout the degree.

Placements will give students hands-on nursing practise in a variety of health care settings including:

- emergency departments
- intensive care units
- paediatric units

Find out if you need to prove [English language proficiency](#) (depends on your country of origin and educational background).

## Your fee

**Student Contribution Amount (SCA) for year 1:**  
**\$6,566** (indicative only)

For Commonwealth Supported students commencing this course, the indicative SCA for Year 1 of full-time study of 48 credit points (1.0 EFTSL).

The SCA that you will pay depends on the calendar year in which you undertake your study in the course, and the specific units of study in which you enrol.

**This amount is subject to annual increase each year of your study (subject to a maximum amount determined by the Australian Government), effective at the start of each calendar year. Please read carefully the 'Important Fee Information' section set out below.**

You will be required to purchase a uniform which must be worn on clinical placements and you will need to factor in travel costs to clinical placements.

## Scholarships

Applications for Susan Wakil Scholarships are now open.

Learn more and apply →

## How to apply

Prospective domestic students apply through the Universities Admissions Centre (UAC) for a [Commonwealth supported place](#). Refer to the [UAC website](#) for key dates. Separate scholarship deadlines apply, visit the [scholarships website](#) for details.

For other useful information, visit our [How to apply](#) page.

Current University of Sydney students applying to transfer from one bachelor's degree to another apply directly to the University. The exact process will depend on the course you are currently in and the course to which you wish to transfer. For more information visit the [Change your course](#) page.

Current students applying to transfer from a diploma to a bachelor's degree must apply through UAC.

[less information](#)

Refer to the [UAC website](#)

Separate scholarship deadlines apply - visit the [Scholarships webpage](#) for details.

## Starting date



- mental health facilities
- community health centres.

Students also have the opportunity to undertake overseas clinical placements, exploring nursing within the context of other cultures and languages.

[less information](#)

Units of Study



## Sample study plan

Bachelor of Nursing (Advanced Studies)

Year	Sem	Unit of study			
1	1	Health and Human Biology	Health Assessment	Population Health to Personal Healthcare	Nursing Knowledge, Practice and Policy
	2	Interruptions to Normal Physiology	Understanding Experiences of Illness	Health Research	Acute Care Nursing Practice 6
2	1	Introduction to Pharmacology 6	Contexts of Health and Disease	Understanding Mental Health and Illness	Ageing, Health and Care
	2	Pharmacology, People and Practice	Clinical Practice in Mental Health	Indigenous People, Health and Care	Managing Chronic Conditions
3	1	Child and Adolescent Health and Care	Nursing the Critically Ill Person	Community Health Nursing	Frameworks for Nursing Practice
	2	First Line Intervention	Life Limiting Conditions and Palliation	Australian Health Care System	Professional Practice - (BN[AS])

[less information](#)

## Assumed knowledge

## Admission criteria

Admission to this course is on the basis of the following:

- a [secondary education qualification](#) such as the NSW Higher School Certificate (including national and international equivalents), or [approved higher education study](#), including approved preparation courses
- [English language requirements](#) where these are not demonstrated by sufficient qualifications taught in English.

**Admission pathways** are open to domestic applicants on the basis of equity or other adjustment factors, including for Aboriginal and Torres Strait Islander applicants. For details, visit [admission pathways](#).

In addition, it is required that applicants have the ability to undertake [clinical placements](#). Please note this course is not available to applicants who are already registered to practice as a nurse in an Australian state or territory.

The academic criteria that are displayed are applicable to currently available courses only, and are updated annually in October and may be changed without notice. The Handbooks Online and the University of Sydney Calendar are the official legal source of information relating to study at the University of Sydney, and you are referred to those documents.

## Inherent requirements

Inherent requirements are the essential tasks and activities necessary to be able to achieve the core learning outcomes of a course. They are specific to a particular course or discipline. To assist students to make informed choices about their study, we have identified and set out the [inherent requirements for this course](#).

Semester 1 (February)

## Related articles

[5 reasons to study nursing at the University of Sydney](#) →  
[I study nursing at the University of Sydney](#) →

## Related courses

[Bachelor of Nursing \(Honours\)](#) →  
[Master of Nursing \(Graduate Entry\)](#) →

Apply



## Professional accreditation

The Bachelor of Nursing (Advanced Studies) is accredited by the Australian Nursing and Midwifery Accreditation Council and approved by the Nursing and Midwifery Board of Australia. Graduates will be eligible to apply for registration with the Nursing and Midwifery Board of Australia.

## Honours

Students with a credit average are invited to apply for the [honours program](#). This involves four units relating to research methods and the preparation of a thesis. Students undertake research work independently under the guidance of a supervisor.

Student profiles



## Careers and future study

### Career Pathways

Graduates of this course will be prepared to work in a range of environments including:

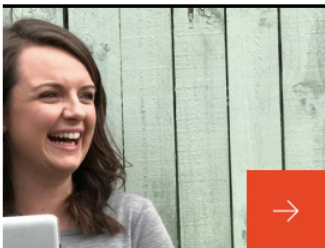
- Public and private healthcare systems
- Acute care hospitals
- Children's hospitals
- Trauma and emergency care
- Mental health nursing
- Aged care
- Community nursing
- Palliative care
- Home care nursing
- Drug and alcohol centres
- Operating rooms and other surgical settings
- Rural and remote nursing
- Pharmaceutical industry
- Clinical research trials
- Other health and education-related fields

Bachelor of Nursing (Advanced Studies) graduates are eligible to apply for registration with the [Nursing and Midwifery Board of Australia](#) to practise as a nurse in Australia.

### Future study options

Graduates of the Bachelor of Nursing (Advanced Studies) with a credit level are eligible to progress to the [Bachelor of Nursing \(Honours\)](#) or complete postgraduate studies. Sydney Nursing School offers a range of [postgraduate nursing courses](#) in specialty areas of nursing including:

- Cancer and haematology nursing
- Advanced nursing practice
- Clinical trials practice
- Intensive care nursing
- Mental health nursing
- Primary health care nursing
- Nurse practitioner



#### I study nursing: Amy Wenham

"Nursing is quite different from any other degree. It is the friends that you make here that help get you through everything



#### I study nursing: Carlo Sudario

"I grew up surrounded by nurses and have always wanted a career in a hospital setting, nursing was the obvious choice for

so get involved in student groups, make friends with people in your classes and always remember why you wanted to become a nurse!"



me. I enjoy helping people in need and I think the nature of the nursing profession suits me well."



---

## **The Sydney Experience**

---



The Sydney Undergraduate Experience



---

## **Important fee information**

---

### Domestic students

#### Indicative Undergraduate Student Contribution Amount

The student contribution amount for a Commonwealth Supported Place is an indication only of the amount payable in Year 1 for a standard full time load of 48 credit points (1.0 EFTSL). The exact student contribution that you pay will depend on the calendar year in which you undertake your study in the course, and the specific units of study in which you enrol. For further information about how to calculate your specific total student contribution, please refer to the University's [Tuition Fees website](#).

#### Annual review and fee increases

Importantly, student contribution amounts are subject to annual review by the University, and will increase each year of your period of study (subject to a Commonwealth specified cap), effective at the start of each calendar year.

#### Additional incidental costs

Please note that for some courses there are additional costs in addition to the student contribution. Some of these additional costs are significant, for example, course-specific materials, tools, protective clothing, and equipment. Please consult the University's web page for more information: <https://sydney.edu.au/students/materials-and-equipment.html>.

## Visa/MasterCard/American Express/JCB surcharge

Please note that a surcharge of 1.53% will apply for payments made by Visa, MasterCard, American Express or JCB. The surcharge is subject to review and may change. Information about payment methods and the surcharge is set out at: <http://sydney.edu.au/study/finances-fees-costs/fees-and-loans/paying-your-fees.html>.

## Potential for inaccuracy

Whilst every reasonable effort has been made to include correct and up to date information here, you are also advised to consult directly with the Student Centre so that they can provide you with specific and up to date information about fees.

## International students

### Indicative International Tuition Fees for Undergraduate Students

The tuition fee for international undergraduate students is an indication of the fees payable in Year 1 for a standard full time load of 48 credit points (1.0 EFTSL). Depending on the calendar year in which you undertake your study, and if your study load is more or less than the 1.0 EFTSL, your tuition fee will differ from the indicative amount. For further information about how to calculate your specific total tuition fees, please refer to the University's [Tuition Fees website](#)

### Annual review and fee increases

Importantly, tuition fees are subject to annual review, and will increase each year of your period of study, effective at the start of each calendar year.

### Additional incidental costs and health insurance

For some courses there are incidental costs additional to the tuition fees. Some of these incidental costs are significant, for example, course-specific materials, tools, protective clothing, and equipment. Further information about these costs is available from <https://sydney.edu.au/students/materials-and-equipment.html>. In addition to the fees indicated here for the course of study, International Students studying on an Australian Student Visa must have appropriate health insurance for the duration of their studies on a Student Visa through a government approved provider of the Overseas Student Health Cover (OSHC) scheme. This is a requirement of the Australian Government, unless otherwise exempted by the Government. Further information is available from <https://sydney.edu.au/study/finances-fees-costs/living-costs/health-insurance.html>.

## Visa/MasterCard/American Express/JCB surcharge

Please note that a surcharge of 1.53% will apply for payments made by Visa, MasterCard, American Express or JCB. The surcharge is subject to review and may change. Information about payment methods and the surcharge is set out at: <http://sydney.edu.au/study/finances-fees-costs/fees-and-loans/paying-your-fees.html>.

## Potential for inaccuracy

Whilst every reasonable effort has been made to include correct and up to date information here, you are also advised to consult directly with the [Student Centre](#) so that they can provide you with specific and up to date information about fees.

## Disclaimer

The course information on this website applies only to prospective students. Current students should refer to faculty handbooks for current or past course information.



To help you understand common terms that we use at the University, we offer an [online glossary](#).



*Leadership for good starts here*



Follow us

### Media

News  
Find an expert  
Media contacts

### Student links

How to log in to University systems  
Key dates  
Class timetables  
Libraries

### About us

Our rankings  
Faculties and schools  
Centres and institutes  
Campus locations  
Maps and locations

### Connect

Contact us  
Find a staff member  
Careers at Sydney  
Events  
Emergencies and personal safety



[Disclaimer](#)

[Privacy](#)

[Accessibility](#)

[Website feedback](#)

ABN: 15 211 513 464  
CRICOS Number: 00026A  
TEQSA: PRV12057



Courses\_

# Bachelor of Nursing (Honours)

Share



## Study Honours at Sydney Nursing School

- ▲ Our students talk about why they chose to study honours at Sydney Nursing School.

About us

### Global leaders in health education and research

#### No.1 in Australia

The University is ranked first in Australia and fifth in the world for graduate employability in the QS Graduate Employability Rankings 2019.

Find out more.



#### Excellent in teaching and research

We are committed to preparing our graduates for the changing needs of healthcare and the increasing demand for nurses in Australia.

Learn more



Apply



Ask a question



The information on this page applies to prospective students. Current students should refer to their faculty handbooks for course information.



### Admission, fees and how to apply

Depends on your qualification, citizenship status

I would like to start study in

2019



My qualification is from

N/A



N/A



I am

an Australian citizen (i...



The details on this page based on your selections are a guide only, and are subject to change.

### Admission information

Admission pathways



ATAR explained



### English language proficiency

TOEFL - IBT score



A minimum result of 96 overall including a minimum result of 23 in Reading, Listening and Speaking and 25 in Writing

Find out if you need to prove [English language proficiency](#) (depends on your country of origin and educational background).

### Overview

Transform the world of healthcare and enhance your career. Available to high-achieving students, this program provides the opportunity to pursue an independent research project in an area of your interest. Cultivate sophisticated critical thinking skills alongside specialist knowledge as you design and complete a supervised thesis.

As an honours student, you will become part of a thriving community of world-class researchers within the Sydney Nursing School as you develop the expertise and practical skills to produce a written thesis of 10,000-15,000 words. An additional year of study, the honours program is available to meritorious students who have completed a Bachelor of Nursing qualification.

Undertaking an additional year of honours is a unique opportunity to enhance your critical thinking skills, broaden your career options, and actively improve nursing practice and the lives of patients.

### Your fee

**Student Contribution Amount (SCA) for year 1:**  
\$6,566 (indicative only)

Learn more about [honours with the Faculty of Medicine and Health](#).

## Who is honours for?

The program is designed for students who have successfully completed a Bachelor of Nursing and are looking to enhance their critical thinking skills. It allows students to investigate an idea that can improve the practice of nursing and the lives of patients, and opens the door to future research.

[less information](#)

Course details	
Faculty/University School: Faculty of Medicine and Health	
Credit points required: 48	Course abbreviation: BN (Hons)
USyd code: BHNURSIH2000	UAC code: N/A
Study mode: On-campus day	Study type: HONS
Location: Mallett Street	<a href="#">Graduate Attributes</a>
Duration full time: 1 year full time for Domestic and International students	
Duration part time: Part time study available for eligible applicants (excluding international student visa holders)	

Availability for international students	
Available to student visa holders and other eligible international students	
CRICOS code: 077819J	<a href="#">Visa information</a>

## What you'll study

The degree combines coursework with students' own research project. The coursework involves units of study relating to research methods and the preparation of the thesis (approximately 15,000 words).

You will complete four units of study in which you will develop an understanding of research design and methodology, including data collection and analysis techniques, and the ethical considerations involved in undertaking research. You will work with a supervisor who helps guide your project and assists in formulating a research question, study design, ethics submissions, collecting results, and the writing and publishing of your work.

You will also be invited to present to your peers in at least one research forum throughout the year, enabling you to further develop and refine your work.

Research workshops are run in February as well as throughout Semester 1.

A variety of guest speakers with expertise in a range of research areas will present during these workshops.

## Supervisors

Honours students work with a supervisor who assists them throughout their study. The supervisor helps guide the project, and assists in formulating a research question, study design, ethics submissions, collecting results and writing and publishing of work.

[less information](#)

Units of study



## Sample study plan

Bachelor of Nursing (Honours)

For Commonwealth Supported students commencing this course, the indicative SCA for Year 1 of full-time study of 48 credit points (1.0 EFTSL).

The SCA that you will pay depends on the calendar year in which you undertake your study in the course, and the specific units of study in which you enrol.

**This amount is subject to annual increase each year of your study (subject to a maximum amount determined by the Australian Government), effective at the start of each calendar year.**

**Please read carefully the 'Important Fee Information' section set out below.**

## How to apply

Apply online by selecting the 'Apply' button on this page.

### Further requirements:

Please download and complete the [Bachelor of Nursing \(Honours\) Supplementary Form \(pdf, 80KB\)](#) and upload it to your online application.

External applicants also need to upload:

- An official copy of your most recent transcript
- Proof of identity and citizenship status

[less information](#)

### Closing dates

**Semester 1** – 31 January of the commencing year.

We strongly encourage applicants to apply as early as possible, offers are made on a rolling basis and places are limited. Separate scholarship deadlines apply – check the [scholarships website](#) for details.

### Starting date

Semester 1 (February)

## Related articles

[5 reasons to study nursing at the University of Sydney](#) →

## Related courses

[Master of Philosophy \(Nursing\)](#) →

[Doctor of Philosophy \(Nursing\)](#) →

Apply



Year	Sem	Units of study
1	1	Honours semester one
	2	Honours semester two

[less information](#)

View the faculty handbook



## Admission criteria

Applications to the Bachelor of Nursing (Honours) are open to applicants who are considered by Sydney Nursing School to have the requisite knowledge and aptitude to undertake the course. Applicants are expected to have completed their [Bachelor of Nursing](#) from the University of Sydney or from an equivalent university with a minimum Weighted Average Mark (WAM) of 65.

The academic criteria that are displayed are applicable to currently available courses only, and are updated annually in October and may be changed without notice. The Handbooks Online and the University of Sydney Calendar are the official legal source of information relating to study at the University of Sydney, and you are referred to those documents.

## Inherent requirements

Inherent requirements are the essential tasks and activities necessary to be able to achieve the core learning outcomes of a course. They are specific to a particular course or discipline. To assist students to make informed choices about their study, we have identified and set out the [inherent requirements for this course](#).

Student profiles



## Careers & future study

## Graduate opportunities

Graduates can select from a wide and growing range of practice areas in the public and private health care systems including:

- Acute care hospitals
- Children's hospitals
- Trauma and emergency care
- Mental health nursing
- Aged care
- Community nursing
- Palliative care
- Home care nursing
- Drug and alcohol centres
- Operating rooms and other surgical settings
- Rural and remote nursing
- International health

Nurses also work in the pharmaceutical industry, clinical research trials and other health-related fields.

## Future study options

The University of Sydney is a research-intensive university. The Faculty of Medicine and Health and Sydney Nursing School are committed to research that improves patient outcomes and experiences.

Graduates of the honours program can go onto study the [Master of Philosophy \(Nursing\)](#) and the [Doctor of Philosophy \(Nursing\)](#).



The Sydney Undergraduate Experience



---

## Important fee information

---

### Domestic students

#### Indicative Undergraduate Student Contribution Amount

The student contribution amount for a Commonwealth Supported Place is an indication only of the amount payable in Year 1 for a standard full time load of 48 credit points (1.0 EFTSL). The exact student contribution that you pay will depend on the calendar year in which you undertake your study in the course, and the specific units of study in which you enrol. For further information about how to calculate your specific total student contribution, please refer to the University's [Tuition Fees website](#).

#### Annual review and fee increases

Importantly, student contribution amounts are subject to annual review by the University, and will increase each year of your period of study (subject to a Commonwealth specified cap), effective at the start of each calendar year.

#### Additional incidental costs

Please note that for some courses there are additional costs in addition to the student contribution. Some of these additional costs are significant, for example, course-specific materials, tools, protective clothing, and equipment. Please consult the University's web page for more information: <https://sydney.edu.au/students/materials-and-equipment.html>.

#### Visa/MasterCard/American Express/JCB surcharge

Please note that a surcharge of 1.53% will apply for payments made by Visa, MasterCard, American Express or JCB. The surcharge is subject to review and may change. Information about payment methods and the surcharge is set out at: <http://sydney.edu.au/study/finances-fees-costs/fees-and-loans/paying-your-fees.html>.

## Potential for inaccuracy

Whilst every reasonable effort has been made to include correct and up to date information here, you are also advised to consult directly with the Student Centre so that they can provide you with specific and up to date information about fees.

## International students

### Indicative International Tuition Fees for Undergraduate Students

The tuition fee for international undergraduate students is an indication of the fees payable in Year 1 for a standard full time load of 48 credit points (1.0 EFTSL). Depending on the calendar year in which you undertake your study, and if your study load is more or less than the 1.0 EFTSL, your tuition fee will differ from the indicative amount. For further information about how to calculate your specific total tuition fees, please refer to the University's [Tuition Fees website](#)

### Annual review and fee increases

Importantly, tuition fees are subject to annual review, and will increase each year of your period of study, effective at the start of each calendar year.

### Additional incidental costs and health insurance

For some courses there are incidental costs additional to the tuition fees. Some of these incidental costs are significant, for example, course-specific materials, tools, protective clothing, and equipment. Further information about these costs is available from <https://sydney.edu.au/students/materials-and-equipment.html>. In addition to the fees indicated here for the course of study, International Students studying on an Australian Student Visa must have appropriate health insurance for the duration of their studies on a Student Visa through a government approved provider of the Overseas Student Health Cover (OSHC) scheme. This is a requirement of the Australian Government, unless otherwise exempted by the Government. Further information is available from <https://sydney.edu.au/study/finances-fees-costs/living-costs/health-insurance.html>.

### Visa/MasterCard/American Express/JCB surcharge

Please note that a surcharge of 1.53% will apply for payments made by Visa, MasterCard, American Express or JCB. The surcharge is subject to review and may change. Information about payment methods and the surcharge is set out at: <http://sydney.edu.au/study/finances-fees-costs/fees-and-loans/paying-your-fees.html>.

## Potential for inaccuracy

Whilst every reasonable effort has been made to include correct and up to date information here, you are also advised to consult directly with the [Student Centre](#) so that they can provide you with specific and up to date information about fees.



The course information on this website applies only to prospective students. Current students should refer to faculty handbooks for current or past course information.



To help you understand common terms that we use at the University, we offer an [online glossary](#).



*Leadership for good starts here*



FOLLOW US\_

## Media

News  
Find an expert  
Media contacts

## Student links

How to log in to University systems  
Key dates  
Class timetables  
Libraries

## About us

Our rankings  
Faculties and schools  
Centres and institutes  
Campus locations  
Maps and locations

## Connect

Contact us  
Find a staff member  
Careers at Sydney  
Events  
Emergencies and personal safety

Member of



[Disclaimer](#)

[Privacy](#)

[Accessibility](#)

[Website feedback](#)

ABN: 15 211 513 464  
CRICOS Number: 00026A  
TEQSA: PRV12057

Courses\_

# Bachelor of Oral Health

Share



Discover our Bachelor of Oral Health Therapy

About us

## Global leaders in health education

### No.1 in Australia

The University is ranked first in Australia and fifth in the world for graduate employability in the QS Graduate Employability Rankings 2019.

Find out more. →

### Australia's first dental school

The University has been providing education, training and research to oral health and dentistry students for over 100 years.

Find out more. →

## Overview

The Bachelor of Oral Health will prepare you for a rewarding career as an oral health therapist. You will gain the required knowledge, clinical skills and experience to deliver therapeutic dental hygiene and restorative treatment services for patients of all ages, and oral health education and promotion to patients and communities throughout Australia and New Zealand.

## Why study oral health with us?

- **Clinical experience** – during your three years, you'll participate in clinical placements offered at the Westmead Centre for Oral Health, Sydney Dental Hospital, Nepean Dental Health Clinic and other Local Health District dental hospitals.
- **Facilities** – you'll have access to the latest technology, facilities and teaching laboratories.
- **World-class teachers** – you'll learn from internationally-renowned dental professionals, who are some of the most highly respected academics in Australia and the world.
- **Rural or regional placement** – giving you a broader insight into oral health

Apply →

Ask a question →

The information on this page applies to prospective students. Current students should refer to their faculty handbooks for course information. →

## Admission, fees and how to apply

Depends on your qualification, citizenship status

I would like to start study in

2019 ▾

My qualification is from

AUSTRALIA ▾

Domestic A... ▾

I am

an Australian citizen (i... ▾

The details on this page based on your selections are a guide only, and are subject to change.

## Admission information

Admission criteria - Check ATAR/IB or equivalent score →

Most courses will have a [guaranteed ATAR](#) or entry score. If a score is not listed as guaranteed, an entry score will be provided as a guide.

Check the 'Admission criteria' section on this page for other important requirements that may apply to the course. For more on admissions see [undergraduate admission criteria](#).

View most recent [student and ATAR admission profiles](#).

Admission pathways →

ATAR explained →

## English language proficiency

TOEFL - IBT score ▾

A minimum result of 96 overall including a minimum result of 23 in Reading, Listening and

in the community.

- **Accreditation** – the Bachelor of Oral Health is fully accredited by the Australian Dental Council.

## Who should study this course?

People who are looking to become an oral health therapist and are passionate about improving lives through oral health.

[less information](#)

Course details	
Faculty/University School: Faculty of Medicine and Health	
Credit points required: 144	Course abbreviation: BOH
USyd code: BUORAHEA1000	UAC code: 513700
Study mode: On-campus day	Study type: UGCW
Location: Westmead Centre for Oral Health, Sydney Dental Hospital and Camperdown/Darlington	<a href="#">Graduate Attributes</a>
Duration full time: 3 years full time for Domestic and International students	
Duration part time: Not available part time	

Availability for international students	
Available to student visa holders and other eligible international students	
CRICOS code: 072495J	<a href="#">Visa information</a>

## What you'll study

The Bachelor of Oral Health is undertaken full-time over three years. Students will complete units of study giving credit for 144 credit points in order to be awarded the pass degree. In their first year, students will receive instruction in biomedical sciences, head & neck and professional practice and will be introduced to oral health in society and oral health therapy in clinical practice. The remaining two years will be devoted to development of advanced treatment planning and sound clinical reasoning, critical appraisal and clinical practice.

[less information](#)

Units of study



## Sample Study Plan

### Bachelor of Oral Health

Year	Sem	Unit of study		
1	1	Foundations of Oral Health I	Oral Health Clinical Practice I	Life Sciences I
	2	Foundations of Oral Health II	Oral Health Clinical Practice II	Life Sciences II
2	1	Foundations of Oral Health III	Oral Health Clinical Practice III	Life Sciences III
	2	Foundations of Oral Health IV	Oral Health Clinical Practice IV	Life Sciences IV
3	1	Foundations of Oral Health V	Integrated Oral Health Practice	Comprehensive Oral Health

### Speaking and 25 in Writing

Find out if you need to prove [English language proficiency](#) (depends on your country of origin and educational background).

## Your fee

**Student Contribution Amount (SCA) for year 1: \$10,958** (indicative only)

For Commonwealth Supported students commencing this course, the indicative SCA for Year 1 of full-time study of 48 credit points (1.0 EFTSL). The SCA that you will pay depends on the calendar year in which you undertake your study in the course, and the specific units of study in which you enrol. **This amount is subject to annual increase each year of your study (subject to a maximum amount determined by the Australian Government), effective at the start of each calendar year. Please read carefully the 'Important Fee Information' section set out below.**

Additional costs for books, travel and dental instruments is required. Refer to [Ancillary Costs](#) for more information.

## How to apply

Prospective domestic students apply through the Universities Admission Centre (UAC) for a [Commonwealth Supported Place](#).

Refer to the [UAC website](#) for key dates, as well as the [timeline on this page](#).

Applicants must also register for and attend a Multiple Mini Interview (MMI). Please carefully read the admission criteria and timeline information on this page.

For other useful information, visit our '[how to apply](#)' page.

### Transferring

Current students applying to transfer from one bachelor degree to another, apply directly to the University. However, it is the student's responsibility to ensure that they register for the MMI process if applying for the Bachelor of Oral Health.

For more information visit the [transferring courses page](#).

Current students applying to transfer from a diploma to a bachelor degree must apply through UAC.

[less information](#)

### Closing dates

Refer to the [UAC website](#) and the timeline on this page for MMI registrations.

Separate scholarship deadlines apply - visit the [scholarships webpage](#) for details.

5	1	Oral Health V	Health Clinical Practice I	Health Management I	
	2	Foundations of Oral Health VI	Integrated Oral Health Clinical Practice II	Comprehensive Oral Health Management II	

[less information](#)

## Admission criteria

Admission to this course is on the basis of the following criteria:

- a [secondary education qualification](#) such as the NSW Higher School Certificate (including national and international equivalents), or [approved higher education study](#), including approved preparation courses. (Lowest ATAR to be considered: 83 for domestic applicants; 80 for international applicants)
- Satisfactory performance in a series of Multiple Mini Interviews (MMIs) - see below for more information.
- [English language requirements](#) where these are not demonstrated by sufficient qualifications taught in English.

**Admission pathways** are open to domestic applicants on the basis of equity or other adjustment factors, including for Aboriginal and Torres Strait Islander applicants. For details, visit [admission pathways](#).

### Multiple Mini Interviews (MMIs)

All eligible applicants must attend the Multiple Mini Interviews (MMIs). Eligible domestic applicants are required to participate in the MMIs on the Camperdown/Darlington Campus. Eligible international applicants may choose to take part in the MMIs on the Camperdown/Darlington Campus or via a video link.

### About the MMIs

The MMIs are a series of short interviews of approximately 5 minutes each, where applicants move between interview stations and are required to discuss scenarios and/or issues with one or more interviewers. On the day of your interview, you must register 30 minutes prior to your scheduled interview time. Your interview will last 35 minutes. However, you should allow at least one hour in addition to this time in case there is a delay, or there is a need to clarify a matter.

### Registration

All applicants, except Aboriginal and Torres Strait Islander applicants and Early Offer Year 12 (E12) applicants, are required to register online for the MMI via [this website](#). Applicants are required to register online during the registration period and pay a non-refundable Interview Booking and Administration fee of \$100 (incl. GST). Online payment via credit card (Visa or Mastercard) will be required at the time of booking to secure the interview booking. See timeline below for important dates, including registration open and close dates.

Aboriginal and Torres Strait Islander applicants and E12 applicants are not required to register for the MMI or pay the associated Interview Booking and Administration Fee.

MMIs (face-to-face only) will be held on Tuesday 3 and Wednesday 4 December 2019 in the Education Building on the Camperdown/Darlington Campus. After registration, and within 3 working days, applicants will receive an email confirmation specifying the date and venue of their MMI. On 20 November 2019, all applicants will be notified of the specific time of their MMI and are required to confirm their attendance by email. Please be advised that the interview date and time are not negotiable. However, international applicants may choose to attend an MMI via a video link on 26 September 2019.

**Note:** Invitations will be sent by email to the email address provided when registering for the MMI, and for Aboriginal and Torres Strait Islander applicants and E12 applicants, to the email address listed on your UAC application. Please ensure you provide your own phone number and current email address and check all mail boxes including the junk mail box regularly for any correspondence from the University. It is the responsibility of the applicant to check their accounts; the University will not be held responsible for any unread email communication or for any resulting delays or disadvantage.

If an applicant fails to pay the Interview Booking and Administration fee (Aboriginal and E12 applicants excepted) or to attend the interview at their scheduled time, their application for admission to the BOH for 2020 entry will be deemed to have lapsed, and will not be considered further.

## Timeline for 2020 entry

Note:

## Starting date

Semester 1 (February). Visit the '[study dates](#)' page for the commencement date of each academic year.

## Similar courses

### Medicine and Health

Graduate Certificate in Cancer and Haematology Nursing

Graduate Certificate in Evidence-Based Complementary Medicines

Graduate Diploma in Science in Medicine (Sleep Medicine)

Master of Surgery (Endocrine Surgery)

## Related articles

[10 tips for future Bachelor of Oral Health students](#) →

[Study health in Australia at the University of Sydney](#) →

[I study oral health: Amy Lo Monaco](#) →

Apply



1. All dates below are subject to change
2. Times and dates listed are Sydney, Australia time
3. Last updated 1 April 2019.

- **3 April 2019:** UAC applications open for domestic applicants, [apply via UAC](#). E12 scheme applications open, please [apply through E12](#). Internal Transfer applications open in the [Sydney Student Portal](#).
- **12 April 2019:** International applications open.
- **1 August 2019:** MMI registrations open for domestic and international applicants, [register here](#).
- **31 August 2019:** University of Sydney Open Day.
- **5 September 2019:** International direct applications\* close at midnight.

Last day for international applicants who wish to attend an MMI via a video link to complete their MMI registration.

- **26 September 2019:** MMI via Skype for international applicants.
- **27 September 2019:** E12 Scheme applications close.
- **17 October 2019:** HSC exams commence.
- **8 November 2019:** For domestic applicants, MMI registration closes at midnight. Applicants must ensure that they have submitted their application for the Bachelor of Oral Health via the UAC. If an applicant has not applied, the MMI will be cancelled at the cost of the applicant.

Close of adding the Bachelor of Oral Health to your preferences on your UAC application. Internal transfer applications close for the Bachelor of Oral Health.

Aboriginal and Torres Strait Islander applicants need to ensure that they have also applied through the Cadigal Program.

- **14 November 2019:** E12 scheme conditional offers made.
- **20 November 2019:** All applicants who have registered for an MMI, E12 applicants who have received a conditional offer, and Aboriginal and Torres Strait Islander applicants who have applied through the Cadigal Program will be notified of the specific time and venue of their MMI and are required to confirm their attendance within 5 calendar days.
- **3-4 December 2019:** Face-to-face MMIs will be held.
- **18 December 2019:** ATAR scores released on the UAC website. Applicants can change preferences till midnight on this date.
- **Mid December 2019 (TBC):** Direct international offers made.
- **Mid December 2019 (TBC):** University of Sydney Open Day, Camperdown Campus.
- **23 December 2019:** Official first round offers for the Bachelor of Oral Health will be released on the UAC website.
- **10 January 2020:** If required, second round offers for the Bachelor of Oral Health will be released.
- **10 February 2020:** Bachelor of Oral Health classes commence. (Note: All students are required to attend the compulsory orientation sessions from 10 February.)

\* Taylor's College applicants may contact their USFP coordinator or the [Admissions Unit](#) for information.

#### Other requirements

- Successful applicants must provide evidence that they hold a current approved First Aid Certificate at enrolment. [Find out more.](#)
- Before you attend a placement in a [NSW Ministry of Health facility](#), you will need to meet certain requirements to be verified by the NSW Ministry of Health to ensure your safety and that of other students, staff and patients. [Find out more.](#)
- The Australian Health Practitioner Regulation Agency (AHPRA) has announced that all health disciplines will be required to demonstrate English language skills at IELTS level 7 or equivalent. Please note that this standard applies to all applicants for initial registration as a dental practitioner or dental specialist. [Find out more.](#)
- [Find out here](#) what the estimated costs are for materials and equipment.

## Offers and enrolments

There are only approximately 50 student places available each year in the BOH. The admission process is very competitive, with the aim being to select applicants who have the ability to succeed in the course. Successful applicants who apply through the UAC will receive their offers from the UAC; successful international applicants who apply directly to the University will receive their offers from the University Admissions Office.

Students are required to accept their place and enrol in the course within 10 calendar days of an offer. This will help to ensure that all our places are filled for next year and that no one who merits a place in the BOH misses out. Due to the intensity of this course, orientation is held and classes commence on 10 February 2020 and as such, enrolments are earlier than most other undergraduate courses. See the timeline above for key dates.

You will be invited to enrol online for your course and be notified of your compulsory orientation sessions closer to the time.

**Please note: Do not plan any holidays from the beginning of February 2020 as all**



students are required to attend classes and must meet strict attendance requirements to commence and progress in this course.

## Impermissible conduct

The Sydney Dental School reserves the right, in its sole discretion, to vary or cancel an offer of admission if your conduct prior to enrolment causes the faculty to form the view that you are unsuitable for admission to its programs.

Examples of conduct that might make you unsuitable for admission to Sydney Dental School programs include (but are not limited to):

- Failure to treat University of Sydney employees, students, applicants or other members of the University community with respect and courtesy, including failure to use appropriate language and tone in your written or verbal communications;
- Failure to act honestly and ethically in your dealings with University of Sydney employees, students, applicants or other members of the University community;
- Conduct that results in you being suspended or excluded from the University of Sydney;
- Conduct that gives the Sydney Dental School reasonable cause to believe that enrolling you in clinical training may place you, your peers, or members of the public at risk of harm; and
- Conduct that results in you being charged with a criminal offence.

## Disclaimer

Please note the Sydney Dental School regularly reviews the admission criteria and application processes for its courses including the Bachelor of Oral Health. It reserves the right to change these criteria and processes without notice. Information on this website provides advice about the currently applicable criteria and processes, and may not be correct for future application periods.

## Inherent Requirements

Inherent requirements are the essential tasks and activities necessary to be able to achieve the core learning outcomes of a course. They are specific to a particular course or discipline. To assist students to make informed choices about their study, we have identified and set out the [inherent requirements for this course](#).

## Course opportunities

Bachelor of Oral Health allows students to provide dental care to public patients within the two teaching hospitals at Westmead Centre for Oral Health and Sydney Dental Hospital.

Additional opportunities available to students include the chance to:

- undertake a rural placement – conduct an assessment of the oral health needs of a rural community, and develop an appropriate oral health promotion to meet the specific needs of the community
- complete an extramural placement in the third year of the course, allowing students to conduct dental care in community clinics
- complete an aged care project, participating in research at an aged care facility
- complete a preschool project, providing an opportunity for students to develop and deliver an oral health promotion program targeting children under five.

## Professional accreditation

The Bachelor of Oral Health program has been fully accredited for the full five years by the [Australian Dental Council](#). Graduates are eligible for registration with the [Dental Board of Australia](#) and are licensed with the [Environmental Protection Authority](#) to use diagnostic radiation.

Download the undergraduate medicine and health guide



Meet the academic coordinator



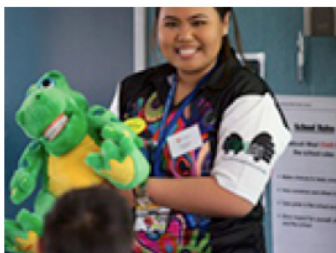
## Careers & future study



## Career Pathways

Oral health therapists are an integral part of the dental team, providing preventative dental services to patients of all ages in both the public and private sector. Career opportunities include:

- School and community dental services
- Hospitals
- Residential care settings
- General private practice
- Specialist private practice
- Research
- Education
- Oral health promotion



Careers\_

### Graduate profile

Renee Boreta

"Each day as an oral health therapist is a rewarding experience and studying to have a dual qualification in hygiene and therapy means there is always something new and interesting each day. The profession covers a broad spectrum of health encouraging not only good oral health but also overall wellbeing."



### Life as an oral health student

Q&A with a student

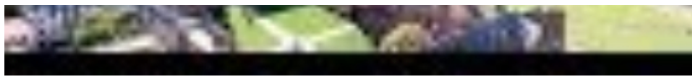


## Further study

The Bachelor of Oral Health offers undergraduate entry and satisfactory completion of award requirements provides for admission, but does not guarantee admission to, the Doctor of Dental Medicine degree. Outstanding graduates may be eligible for admission to a higher degree by research.

## The Sydney Experience





---

## **Important fee information**

### Domestic students

#### **Indicative Undergraduate Student Contribution Amount**

The student contribution amount for a Commonwealth Supported Place is an indication only of the amount payable in Year 1 for a standard full time load of 48 credit points (1.0 EFTSL). The exact student contribution that you pay will depend on the calendar year in which you undertake your study in the course, and the specific units of study in which you enrol. For further information about how to calculate your specific total student contribution, please refer to the University's [Tuition Fees website](#).

#### **Annual review and fee increases**

Importantly, student contribution amounts are subject to annual review by the University, and will increase each year of your period of study (subject to a Commonwealth specified cap), effective at the start of each calendar year.

#### **Additional incidental costs**

Please note that for some courses there are additional costs in addition to the student contribution. Some of these additional costs are significant, for example, course-specific materials, tools, protective clothing, and equipment. Please consult the University's web page for more information: <https://sydney.edu.au/students/materials-and-equipment.html>.

#### **Visa/MasterCard/American Express/JCB surcharge**

Please note that a surcharge of 1.53% will apply for payments made by Visa, MasterCard, American Express or JCB. The surcharge is subject to review and may change. Information about payment methods and the surcharge is set out at: <http://sydney.edu.au/study/finances-fees-costs/fees-and-loans/paying-your-fees.html>.

#### **Potential for inaccuracy**

Whilst every reasonable effort has been made to include correct and up to date information here, you are also advised to consult directly with the Student Centre so that they can provide you with specific and up to date information about fees.

### International students

#### **Indicative International Tuition Fees for Undergraduate Students**

The tuition fee for international undergraduate students is an indication of the fees payable in Year 1 for a standard full time load of 48 credit points (1.0

EFTSL). Depending on the calendar year in which you undertake your study, and if your study load is more or less than the 1.0 EFTSL, your tuition fee will differ from the indicative amount. For further information about how to calculate your specific total tuition fees, please refer to the University's [Tuition Fees website](#)

### Annual review and fee increases

Importantly, tuition fees are subject to annual review, and will increase each year of your period of study, effective at the start of each calendar year.

### Additional incidental costs and health insurance

For some courses there are incidental costs additional to the tuition fees. Some of these incidental costs are significant, for example, course-specific materials, tools, protective clothing, and equipment. Further information about these costs is available from <https://sydney.edu.au/students/materials-and-equipment.html>. In addition to the fees indicated here for the course of study, International Students studying on an Australian Student Visa must have appropriate health insurance for the duration of their studies on a Student Visa through a government approved provider of the Overseas Student Health Cover (OSHC) scheme. This is a requirement of the Australian Government, unless otherwise exempted by the Government. Further information is available from <https://sydney.edu.au/study/finances-fees-costs/living-costs/health-insurance.html>.

### Visa/MasterCard/American Express/JCB surcharge

Please note that a surcharge of 1.53% will apply for payments made by Visa, MasterCard, American Express or JCB. The surcharge is subject to review and may change. Information about payment methods and the surcharge is set out at: <http://sydney.edu.au/study/finances-fees-costs/fees-and-loans/paying-your-fees.html>.

### Potential for inaccuracy

Whilst every reasonable effort has been made to include correct and up to date information here, you are also advised to consult directly with the [Student Centre](#) so that they can provide you with specific and up to date information about fees.

## Disclaimer

The course information on this website applies only to prospective students. Current students should refer to faculty handbooks for current or past course information.



To help you understand common terms that we use at the University, we offer an [online glossary](#).



Follow us\_

## Media

News  
Find an expert  
Media contacts

## Student links

How to log in to University systems  
Key dates  
Class timetables  
Libraries

## About us

Our rankings  
Faculties and schools  
Centres and institutes  
Campus locations  
Maps and locations

## Connect

Contact us  
Find a staff member  
Careers at Sydney  
Events  
Emergencies and personal safety

Member of



[Disclaimer](#)

[Privacy](#)

[Accessibility](#)

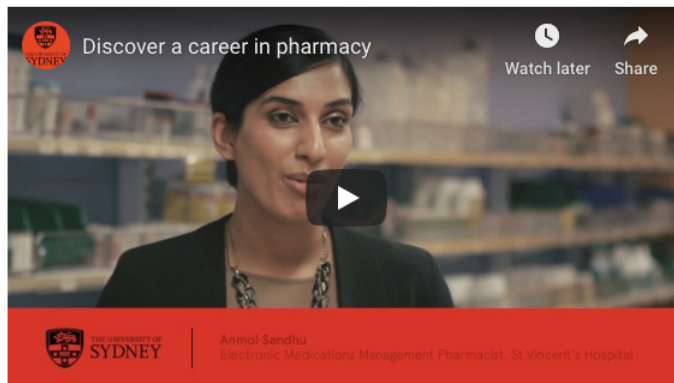
[Website feedback](#)

ABN: 15 211 513 464  
CRICOS Number: 00026A  
TEQSA: PRV12057

Courses\_

# Bachelor of Pharmacy and Management

Share



Find out where a degree in pharmacy can lead you

About us

## Global leaders in health education

### No.1 in Australia

The University is ranked first in Australia and fifth in the world for graduate employability in the QS Graduate Employability Rankings 2017.

[Find out more.](#)

### A wealth of experience

The University has been educating and training pharmacy students and researchers for over 100 years.

[Find out more.](#)

## Overview

The Bachelor of Pharmacy and Management is an innovative five-year degree that teaches a unique combination of pharmacy skills and business knowledge to develop the comm...

[more information](#)

### Course details

Faculty/University School: Faculty of Medicine and Health

Credit points required: 240

Course abbreviation: BPharmMgmt

USyd code: BUPHAMGT1000

UAC code: 513765

Study mode: On-campus day

Study type: UGCW

Location: Camperdown/Darlington campus

[Graduate Attributes](#)

Duration full time: 5 years full time for Domestic and International students

Apply



Ask a question



The information on this page applies to prospective students. Current students should refer to their faculty handbooks for course information.



## Admission, fees and how to apply

Depends on your qualification, citizenship status

I would like to start study in

2019



My qualification is from

AUSTRALIA



Domestic A...



I am

an Australian citizen (i...



The details on this page based on your selections are a guide only, and are subject to change.

## Admission information

Admission criteria - Check ATAR/IB or equivalent score



Most courses will have a [guaranteed ATAR](#) or entry score. If a score is not listed as guaranteed, an entry score will be provided as a guide.

Check the 'Admission criteria' section on this page for other important requirements that may apply to the course. For more on admissions see [undergraduate admission criteria](#).

View most recent [student and ATAR admission profiles](#).

Admission pathways



ATAR explained



## English language proficiency

TOEFL - IBT score



A minimum result of 85 overall including a minimum result of 17 in Reading, Listening and Speaking and 19 in Writing



Duration part time: Not available part time

#### Availability for international students

Available to student visa holders and other eligible international students

CRICOS code: 089436C

[Visa information](#)

## Subject areas

Completion of a major is not a requirement of the Bachelor of Pharmacy and Management but candidates may pursue one if they would like to. A major requires the completion of 24 credit points chosen from units of study listed during the fifth year of study. Optional majors in fifth year: industrial pharmacy or international exchange.

Industrial  
Pharmacy  
(Major)

International  
Pharmacy  
(Major)

## What you'll study

During your first year of the Bachelor of Pharmacy and Management you will study biology and chemistry and be introduced to pharmacy through foundation and social pharmacy studies.

The remaining four years of the course are devoted to higher levels of biomedical and pharmaceutical sciences, specialised clinical pharmacy studies together with relevant business studies. In senior years, considerable time is spent in clinical placements in community and hospital pharmacies, where valuable practical experience is gained.

You will have the opportunity to undertake study in a pharmacy major in your fifth year of study (industrial pharmacy or international) or to complete fifth year advanced study and undertake an individual research project as an honours candidate.

[less information](#)

Units of Study



## Sample study plan

### Bachelor of Pharmacy and Management

Year	Sem	Unit of study			
1	1	Human Biology	Economics for Business Decision Making	Chemistry A (Pharmacy)	Foundations of Pharmacy
	2	From Molecules to Ecosystems	Accounting, Business and Society	Chemistry B (Pharmacy)	Pharmacy Practice 1
2	1	Basic Pharmaceutical Sciences	Microbiology and Infection	Physiology for Pharmacy	Foundations of Work and Employment
	2	Foundations of Business Law	Pharmacology for Pharmacy	Physical Pharmaceutics and Formulation A	Pharmacy Practice 2
3	1	Digital Business Innovation	Marketing Principles	Drug Discovery and Design A	Therapeutic Principles
	2	Drug Discovery and Design B	Physical Pharmaceutics and Formulation B	Foundations of Management	HR Strategies and Processes
4	1	Pharmaceutical Skills and Dispensing A Cardiovascular and Renal Respiratory Endocrine, Diabetes and Reproductive			

Find out if you need to prove [English language proficiency](#) (depends on your country of origin and educational background).

## Your fee

**Student Contribution Amount (SCA) for year 1:**  
**\$9,359** (indicative only)

For Commonwealth Supported students commencing this course, the indicative SCA for Year 1 of full-time study of 48 credit points (1.0 EFTSL).

The SCA that you will pay depends on the calendar year in which you undertake your study in the course, and the specific units of study in which you enrol.

**This amount is subject to annual increase each year of your study (subject to a maximum amount determined by the Australian Government), effective at the start of each calendar year. Please read carefully the 'Important Fee Information' section set out below.**

Learn more about Sydney Pharmacy School



## How to apply

Prospective domestic students apply through the Universities Admissions Centre (UAC) for a [Commonwealth...](#)

[more information](#)

Refer to the [UAC website](#)

Separate scholarship deadlines apply – visit the [scholarships webpage](#) for details.

## Starting date

Semester 1 (February)

## Related articles

[5 reasons to study pharmacy at the University of Sydney](#) →  
[6 things we discovered about studying pharmacy](#) →  
[Study health in Australia at the University of Sydney](#) →

Apply



		Gastrointestinal			
	2	Clinical Placement A and B Pharmaceutical Skills and Dispensing B Musculoskeletal, Dermatological and Senses Oncology and Anti-Infective Agents Neurology and Mental Health			
5	1	Clinical Placement C	Pharmacotherapeutics	Integrated Dispensing Practice	Pharmacy Services and Public Health
	2	Novel Therapeutics	Interdisciplinary Health Project	Professional Practice	Clinical Placement D

[less information](#)

## Assumed knowledge

Mathematics and chemistry are assumed knowledge for this course. Biology or physics are recommended. Mathematics (equivalent of band 4 in the NSW HSC subject Mathematics\* or band E3 in Mathematics Extension 1 or 2) from 2019, if you are completing a senior secondary (year 12) qualification in Australia. For details including equivalent requirements for other qualifications, visit [Mathematics course prerequisites](#).

\*The subject requirement refers to Mathematics (not Mathematics General or Mathematics Standard), or Mathematics Advanced which will be first examined in the NSW HSC in 2020.

## Applying for honours

Honours is by invitation only and is available in the fifth year of the program for high achieving students. Graduates of the Bachelor of Pharmacy and Management seeking further academic studies in pharmacy are recommended to consider our postgraduate research courses, including Master of Philosophy and Doctor of Philosophy.

### About honours

The award of honours in the Bachelor of Pharmacy and Management recognises superior performance throughout the course.

Honours provides an important basis if you wish to branch into a specialised area and will be particularly useful if you're seeking employment in industry, government, hospital laboratories, research institutions, or considering continuation to postgraduate studies.

## Admission criteria

Admission to this course is on the basis of the following criteria:

- [Secondary education qualification](#) such as the NSW Higher School Certificate (including national and international equivalents), or [approved higher education study](#), including approved preparation courses.
- [English language requirements](#) where these are not demonstrated by sufficient qualifications taught in English.

**Admission pathways** are open to domestic applicants on the basis of equity or other adjustment factors, including for Aboriginal and Torres Strait Islander applicants. For details, visit [admission pathways](#).

## Prerequisites

Mathematics (equivalent of band 4 in the NSW HSC subject Mathematics\* **OR** band E3 in Mathematics Extension 1 or 2, if higher level maths has been undertaken)

In 2019, the maths prerequisite will apply to domestic and international students completing a secondary education (year 12) qualification in Australia (including Australian state and territory year 12 qualifications taken outside Australia).

From 2020, the maths prerequisite applies to domestic students undertaking a secondary education qualification in Australia (including Australian state and territory year 12 qualifications taken outside Australia), higher education studies (e.g. bachelor's degree, diploma) and approved preparation programs.

From 2020, it will also apply to international students undertaking a secondary education qualification or an approved preparation or foundation program, in Australia (this includes Australian state and territory year 12 qualifications and foundation programs undertaken outside Australia).

For details, including equivalent requirements for other qualifications, visit [Mathematics course prerequisites](#).

*\*The subject requirement refers to Mathematics (not Mathematics General or Mathematics Standard), or Mathematics Advanced which will be first examined in the NSW HSC in 2020.*

## Tertiary Record Holders

Very good tertiary record in at least one year of full-time study at Bachelor's degree level (or part-time equivalent). See details regarding [previous tertiary study](#).

## Credit for Previous Study

If you have previously completed relevant other studies at tertiary level you may be eligible for credit for previous studies – also called 'credit transfer' or 'advanced standing' – for the Bachelor of Pharmacy and Management. If you are applying through UAC you may apply for credit once you have enrolled in the course. If you are applying as a direct international applicant, you have the option of applying for credit as part of the course application process. You can also apply after enrolment. If you have studied a relevant course at a Singapore Polytechnic Institution, special information on credit transfer is available on the [Credit for previous study page](#).

## Inherent requirements

Inherent requirements are the essential tasks and activities necessary to be able to achieve the core learning outcomes of a course. They are specific to a particular course or discipline. To assist students to make informed choices about their study, we have identified and set out the [inherent requirements for this course](#).

The academic requirements that are displayed are applicable to currently available courses only, and are updated annually in October and may be changed without notice. The [Handbooks Online](#) and the University of Sydney Calendar are the official legal source of information relating to study at the University of Sydney, and you are referred to those documents.

## Course opportunities

The clinical experience program in the Bachelor of Pharmacy and Management reflects the contemporary health care environment. Students undertake a two week block placement during their fourth year. Students also have a further 2 x two week block placements in their fifth year. By the end of their fifth year, all students have had at least three, two week block placements in clinical experience. The block placements are carried out at hospital and community pharmacies, and include opportunities in the pharmaceutical industry, professional organisations and in rural health settings.

Before you can attend a placement, you need to have certain [clinical placement checks and clearances](#). You will need a criminal record check and evidence of vaccinations. The checks can be completed after your enrolment in the course. You will need to supply your proof of vaccination documents when you attend your placement (including any existing records of vaccinations from your home country). All documents requested are to be provided in English. If not in English, a certified translation is required to be provided.

Enrolment into the pharmacy program will require that you are [registered as a student with the Australian Health Practitioner Regulation Agency \(AHPRA\)](#).

## Progression rules

Progression Rules are detailed in the [Pharmacy Handbook Course Resolutions](#).

## Essential Requirements

Students are advised that it is a requirement of the Bachelor of Pharmacy and Management that they participate appropriately, in all classroom and examination tasks, including role plays and group work involving all genders. The School is unable to exempt students from these tasks for legal reasons.

To assist students to make informed choices about their study, we have identified and set out the [Inherent Requirements](#) for coursework award courses in pharmacy.

## Professional accreditation

To become a registered pharmacist, graduates of this course must complete 1,824 hours (one year) of supervised practical training and the Intern Training Program in order to register with the Pharmacy Board of Australia. International students will need to

## Career opportunities for pharmacy graduates

Watch the video from Professor Andrew McLachlan, Head of School and Dean



### Careers & future study

#### Career Pathways

- Community pharmacy (community practice)
- Hospital pharmacy
- Research positions within universities or research institutes
- Pharmaceutical industry- drug development
- Marketing of drug development

Careers\_

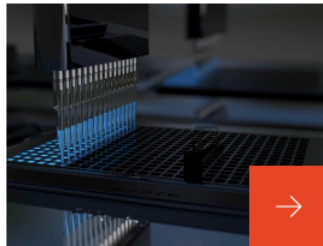


#### Bachelor of Pharmacy alumni working as a senior poisons specialist

Rose Cairns is a Research Associate in clinical pharmacology and toxicology at the University of Sydney. As well as the Senior Poisons Specialist at the NSW Poisons Information Centre at the Children's Hospital at Westmead.



Careers\_



#### Bachelor of Pharmacy alumni working as a medical science liaison

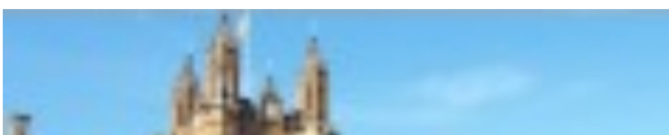
Natalie has worked across three continents and explored community pharmacy, clinical trials research and the pharmaceutical industry before finding her feet in oncology.



#### Future study options

On completion of this course, students may enrol in the [Graduate Certificate in Pharmacy Practice](#) to complete the Intern Training Program.

### The Sydney Experience





The Sydney Undergraduate Experience



---

## **Important fee information**



### Domestic students

#### **Indicative Undergraduate Student Contribution Amount**

The student contribution amount for a Commonwealth Supported Place is an indication only of the amount payable in Year 1 for a standard full time load of 48 credit points (1.0 EFTSL). The exact student contribution that you pay will depend on the calendar year in which you undertake your study in the course, and the specific units of study in which you enrol. For further information about how to calculate your specific total student contribution, please refer to the University's [Tuition Fees website](#).

#### **Annual review and fee increases**

Importantly, student contribution amounts are subject to annual review by the University, and will increase each year of your period of study (subject to a Commonwealth specified cap), effective at the start of each calendar year.

#### **Additional incidental costs**

Please note that for some courses there are additional costs in addition to the student contribution. Some of these additional costs are significant, for example, course-specific materials, tools, protective clothing, and equipment. Please consult the University's web page for more information: <https://sydney.edu.au/students/materials-and-equipment.html>.

#### **Visa/MasterCard/American Express/JCB surcharge**

Please note that a surcharge of 1.53% will apply for payments made by Visa, MasterCard, American Express or JCB. The surcharge is subject to review and may change. Information about payment methods and the surcharge is set out at: <http://sydney.edu.au/study/finances-fees-costs/fees-and-loans/paying-your-fees.html>.

#### **Potential for inaccuracy**

Whilst every reasonable effort has been made to include correct and up to date information here, you are also advised to consult directly with the Student Centre so that they can provide you with specific and up to date information about fees.

### International students

## Indicative International Tuition Fees for Undergraduate Students

The tuition fee for international undergraduate students is an indication of the fees payable in Year 1 for a standard full time load of 48 credit points (1.0 EFTSL). Depending on the calendar year in which you undertake your study, and if your study load is more or less than the 1.0 EFTSL, your tuition fee will differ from the indicative amount. For further information about how to calculate your specific total tuition fees, please refer to the University's [Tuition Fees website](#)

### Annual review and fee increases

Importantly, tuition fees are subject to annual review, and will increase each year of your period of study, effective at the start of each calendar year.

### Additional incidental costs and health insurance

For some courses there are incidental costs additional to the tuition fees. Some of these incidental costs are significant, for example, course-specific materials, tools, protective clothing, and equipment. Further information about these costs is available from <https://sydney.edu.au/students/materials-and-equipment.html>. In addition to the fees indicated here for the course of study, International Students studying on an Australian Student Visa must have appropriate health insurance for the duration of their studies on a Student Visa through a government approved provider of the Overseas Student Health Cover (OSHC) scheme. This is a requirement of the Australian Government, unless otherwise exempted by the Government. Further information is available from <https://sydney.edu.au/study/finances-fees-costs/living-costs/health-insurance.html>.

### Visa/MasterCard/American Express/JCB surcharge

Please note that a surcharge of 1.53% will apply for payments made by Visa, MasterCard, American Express or JCB. The surcharge is subject to review and may change. Information about payment methods and the surcharge is set out at: <http://sydney.edu.au/study/finances-fees-costs/fees-and-loans/paying-your-fees.html>.

### Potential for inaccuracy

Whilst every reasonable effort has been made to include correct and up to date information here, you are also advised to consult directly with the [Student Centre](#) so that they can provide you with specific and up to date information about fees.

## Disclaimer

The course information on this website applies only to prospective students. Current students should refer to faculty handbooks for current or past course information.



To help you understand common terms that we use at the University, we offer an [online glossary](#).





THE UNIVERSITY OF  
SYDNEY

*Leadership for good starts here*



Follow us

## Media

[News](#)  
[Find an expert](#)  
[Media contacts](#)

## Student links

[How to log in to University systems](#)  
[Key dates](#)  
[Class timetables](#)  
[Libraries](#)

## About us

[Our rankings](#)  
[Faculties and schools](#)  
[Centres and institutes](#)  
[Campus locations](#)  
[Maps and locations](#)

## Connect

[Contact us](#)  
[Find a staff member](#)  
[Careers at Sydney](#)  
[Events](#)  
[Emergencies and personal safety](#)

Member of



[Disclaimer](#)

[Privacy](#)

[Accessibility](#)

[Website feedback](#)

ABN: 15 211 513 464  
CRICOS Number: 00026A  
TEOSA: PRV12057

Courses\_

# Bachelor of Pharmacy

Share



## Study pharmacy at Sydney

▲ Hear from our Bachelor of Pharmacy graduates

About us

### Global leaders in health education

#### No.1 in Australia

The University is ranked first in Australia and fifth in the world for graduate employability in the QS Graduate Employability Rankings 2018.

[Find out more.](#)

#### A wealth of experience

The University has been educating and training pharmacy students and researchers for over 100 years.

[Find out more.](#)

## Overview

The Bachelor of Pharmacy combines hands-on learning with clinical experience to give you a comprehensive understanding of how drugs are developed and how medications aff...

[more information](#)

### Course details

Faculty/University School: Faculty of Medicine and Health

Credit points required: 192

Course abbreviation: BPharm

USyd code: BUPHARMA1000

UAC code: 513760

Study mode: On-campus day

Study type: UGCW

Apply



Ask a question



The information on this page applies to prospective students. Current students should refer to their faculty handbooks for course information.



## Admission, fees and how to apply

Depends on your qualification, citizenship status

I would like to start study in

2019



My qualification is from

AUSTRALIA



Domestic A...



I am

an Australian citizen (i...



The details on this page based on your selections are a guide only, and are subject to change.

## Admission information

Admission criteria - Check ATAR/IB or equivalent score



Most courses will have a [guaranteed ATAR](#) or entry score. If a score is not listed as guaranteed, an entry score will be provided as a guide.

Check the 'Admission criteria' section on this page for other important requirements that may apply to the course. For more on admissions see [undergraduate admission criteria](#).

View most recent [student and ATAR admission profiles](#).

Admission pathways



ATAR explained



## English language proficiency

TOEFL - IBT score



A minimum result of 85 overall including a minimum result of 17 in Reading, Listening and

Location: Camperdown/Darlington campus	<a href="#">Graduate Attributes</a>
Duration full time: 4 years full time for Domestic and International students	
Duration part time: Not available part time	

Availability for international students	
Available to student visa holders and other eligible international students	
CRICOS code: 000723J	<a href="#">Visa information</a>

## Subject areas

Completion of a major is not a requirement of the Bachelor of Pharmacy. Candidates have the option of completing one major. A major requires the completion of 24 credit points chosen from units of study listed during the fourth year of study.

Industrial Pharmacy (Major)	International Pharmacy (Major)
-----------------------------	--------------------------------

## What you'll study

In your first year you will study biology and chemistry and be introduced to pharmacy through ...

[more information](#)

**Units of Study** →

## Sample study plan

### Bachelor of Pharmacy

Year	Sem	Unit of study		
1	1	Human Biology	Chemistry A (Pharmacy)	Found...

[more information](#)

## Assumed knowledge

Mathematics and Chemistry. Biology or Physics are recommended. From 2019, this course will require a course prerequisite of Mathematics (Band 4 or higher)

## Honours

The award of honours in the Bachelor of Pharmacy recognises superior performance throughout the course.

Honours provides an important basis if you wish to branch into a specialised area and will be particularly useful if you're seeking employment in industry, government, hospital laboratories, research institutions, or considering continuation to postgraduate studies.

### Applying for honours

Honours is by invitation only and is available in the fourth year of the program for high achieving students. On the basis of your previous results, you may be eligible to undertake an independent honours project in [PHAR4830 Honours](#) (24 credit points) during your final year, working under the supervision of an academic staff member.

## Admission criteria

Admission to this course is on the basis of the following criteria:

### Speaking and 19 in Writing

Find out if you need to prove [English language proficiency](#) (depends on your country of origin and educational background).

## Your fee

**Student Contribution Amount (SCA) for year 1: \$9,359** (indicative only)

For Commonwealth Supported students commencing this course, the indicative SCA for Year 1 of full-time study of 48 credit points (1.0 EFTSL).

The SCA that you will pay depends on the calendar year in which you undertake your study in the course, and the specific units of study in which you enrol.

**This amount is subject to annual increase each year of your study (subject to a maximum amount determined by the Australian Government), effective at the start of each calendar year. Please read carefully the 'Important Fee Information' section set out below.**

## How to apply

Prospective domestic students apply through the Universities Admissions Centre (UAC) for a [Commonwealth...](#)

[more information](#)

Refer to the [UAC website](#). Separate scholarship deadlines apply - visit the [scholarships webpage](#) for details.

### Starting date

Semester 1 (February)

## Related articles

- [5 reasons to study pharmacy at the University of Sydney](#) →
- [6 things we discovered about studying pharmacy](#) →
- [Study health in Australia at the University of Sydney](#) →

## Related courses

- [Bachelor of Pharmacy and Management](#) →
- [Graduate Certificate in Pharmacy Practice](#) →

- [Secondary education qualification](#) such as the NSW Higher School Certificate (including national and international equivalents), or [approved higher education study](#), including approved preparation courses.
- [English language requirements](#) where these are not demonstrated by sufficient qualifications taught in English.

**Admission pathways** are open to domestic applicants on the basis of equity or other adjustment factors, including for Aboriginal and Torres Strait Islander applicants. For details, visit [admission pathways](#).

[Master of Pharmacy](#) →  
[Master of Philosophy \(Pharmacy\)](#) →  
[Doctor of Philosophy \(Pharmacy\)](#) →

Apply



## Prerequisites

Mathematics (equivalent of band 4 in the NSW HSC subject Mathematics\* OR band E3 in Mathematics Extension 1 or 2, if higher level maths has been undertaken)

In 2019, the maths prerequisite will apply to domestic and international students completing a secondary education (year 12) qualification in Australia (including Australian state and territory year 12 qualifications taken outside Australia).

From 2020, the maths prerequisite applies to domestic students undertaking a secondary education qualification in Australia (including Australian state and territory year 12 qualifications taken outside Australia), higher education studies (e.g. bachelor's degree, diploma) and approved preparation programs.

From 2020, it will also apply to international students undertaking a secondary education qualification or an approved preparation or foundation program, in Australia (this includes Australian state and territory year 12 qualifications and foundation programs undertaken outside Australia).

For details, including equivalent requirements for other qualifications, visit [Mathematics course prerequisites](#).

*\*The subject requirement refers to Mathematics (not Mathematics General or Mathematics Standard), or Mathematics Advanced which will be first examined in the NSW HSC in 2020.*

## Inherent requirements

Inherent requirements are the essential tasks and activities necessary to be able to achieve the core learning outcomes of a course. They are specific to a particular course or discipline. To assist students to make informed choices about their study, we have identified and set out the [Inherent Requirements for this course](#).

## Credit for previous study

If you have previously completed relevant other studies at a tertiary level you may be eligible for credit for previous studies – also called 'credit transfer' or 'advanced standing' – for the Bachelor of Pharmacy.

If you are applying through UAC you may apply for credit once you have enrolled in the course. If you are applying as a direct international applicant, you have the option of applying for credit as part of the course application process. You can also apply after enrolment. If you have studied a relevant course at a Singapore Polytechnic Institution, special information on credit transfer is available on the [credit for previous study page](#).

## Clinical placements

The clinical experience program in the Bachelor of Pharmacy reflects the contemporary healthcare environment. The block placements are carried out at hospital and community pharmacies, and include opportunities in the pharmaceutical industry, professional organisations and in rural health settings.

By the end of their fourth year, all students have had at least three, two-week block placements in clinical experience. Students undertake a two-week block placement during their third year. Students also have a further two two-week block placements in their fourth year.

Before you can attend a placement, you need to have certain [clinical placement checks and clearances](#). The checks can be completed after your enrolment in the course.

Enrolment into the pharmacy program will require that you are [registered as a student with the Australian Health Practitioner Regulation Agency \(AHPRA\)](#).

## Professional accreditation

To become a registered pharmacist, graduates of this course must complete 1824 hours

to become a registered pharmacist, graduates of this course must complete 1,521 hours (one year) of supervised practical training and the Intern Training Program in order to register with the Pharmacy Board of Australia. International students will need to demonstrate an IELTS score of 7.5 or equivalent.

## Careers and future study

### Career Pathways

- Community pharmacy (community practice)
- Hospital pharmacy
- Research positions within universities or research institutes
- Pharmaceutical industry- drug production
- Marketing of drug development

[Learn more about career pathways](#) for pharmacy graduates from Professor Andrew McLachlan AM, Head of School and Dean.

Careers\_



#### Master of Pharmacy alumni working as a senior product manager

William Pastega is a Sydney Pharmacy School graduate working in the pharmaceutical industry. He manages the Novartis ophthalmology portfolio worth \$100 million each year.



Careers\_



#### Bachelor of Pharmacy alumni working as a senior poisons specialist

Rose Cairns is a Research Associate in clinical pharmacology and toxicology at the University of Sydney. As well as the Senior Poisons Specialist at the NSW Poisons Information Centre at the Children's Hospital at Westmead.



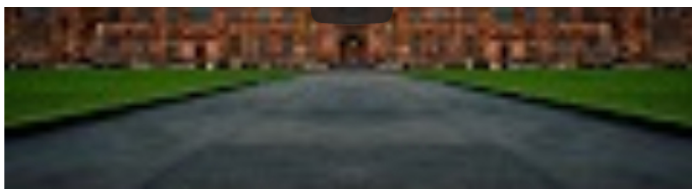
### Future study options

On completion of this course, students may enrol in the [Graduate Certificate in Pharmacy Practice](#) to complete the Intern Training Program.

Graduates of the Bachelor of Pharmacy seeking further academic studies in pharmacy are recommended to consider our postgraduate research courses, including [Master of Philosophy \(Pharmacy\)](#) and [Doctor of Philosophy \(Pharmacy\)](#).

## The Sydney Experience





The Sydney Undergraduate Experience



---

## **Important fee information**



### Domestic students

#### **Indicative Undergraduate Student Contribution Amount**

The student contribution amount for a Commonwealth Supported Place is an indication only of the amount payable in Year 1 for a standard full time load of 48 credit points (1.0 EFTSL). The exact student contribution that you pay will depend on the calendar year in which you undertake your study in the course, and the specific units of study in which you enrol. For further information about how to calculate your specific total student contribution, please refer to the University's [Tuition Fees website](#).

#### **Annual review and fee increases**

Importantly, student contribution amounts are subject to annual review by the University, and will increase each year of your period of study (subject to a Commonwealth specified cap), effective at the start of each calendar year.

#### **Additional incidental costs**

Please note that for some courses there are additional costs in addition to the student contribution. Some of these additional costs are significant, for example, course-specific materials, tools, protective clothing, and equipment. Please consult the University's web page for more information: <https://sydney.edu.au/students/materials-and-equipment.html>.

#### **Visa/MasterCard/American Express/JCB surcharge**

Please note that a surcharge of 1.53% will apply for payments made by Visa, MasterCard, American Express or JCB. The surcharge is subject to review and may change. Information about payment methods and the surcharge is set out at: <http://sydney.edu.au/study/finances-fees-costs/fees-and-loans/paying-your-fees.html>.

#### **Potential for inaccuracy**

Whilst every reasonable effort has been made to include correct and up to date information here, you are also advised to consult directly with the Student Centre so that they can provide you with specific and up to date information about fees.

### International students

#### **Indicative International Tuition Fees for Undergraduate Students**



## Indicative international tuition fees for undergraduate students

The tuition fee for international undergraduate students is an indication of the fees payable in Year 1 for a standard full time load of 48 credit points (1.0 EFTSL). Depending on the calendar year in which you undertake your study, and if your study load is more or less than the 1.0 EFTSL, your tuition fee will differ from the indicative amount. For further information about how to calculate your specific total tuition fees, please refer to the University's [Tuition Fees website](#)

### Annual review and fee increases

Importantly, tuition fees are subject to annual review, and will increase each year of your period of study, effective at the start of each calendar year.

### Additional incidental costs and health insurance

For some courses there are incidental costs additional to the tuition fees. Some of these incidental costs are significant, for example, course-specific materials, tools, protective clothing, and equipment. Further information about these costs is available from <https://sydney.edu.au/students/materials-and-equipment.html>. In addition to the fees indicated here for the course of study, International Students studying on an Australian Student Visa must have appropriate health insurance for the duration of their studies on a Student Visa through a government approved provider of the Overseas Student Health Cover (OSHC) scheme. This is a requirement of the Australian Government, unless otherwise exempted by the Government. Further information is available from <https://sydney.edu.au/study/finances-fees-costs/living-costs/health-insurance.html>.

### Visa/MasterCard/American Express/JCB surcharge

Please note that a surcharge of 1.53% will apply for payments made by Visa, MasterCard, American Express or JCB. The surcharge is subject to review and may change. Information about payment methods and the surcharge is set out at: <http://sydney.edu.au/study/finances-fees-costs/fees-and-loans/paying-your-fees.html>.

### Potential for inaccuracy

Whilst every reasonable effort has been made to include correct and up to date information here, you are also advised to consult directly with the [Student Centre](#) so that they can provide you with specific and up to date information about fees.

---

## Disclaimer

The course information on this website applies only to prospective students. Current students should refer to faculty handbooks for current or past course information.



To help you understand common terms that we use at the University, we offer an [online glossary](#).



FOLLOW US

## Media

News  
Find an expert  
Media contacts

## Student links

How to log in to University systems  
Key dates  
Class timetables  
Libraries

## About us

Our rankings  
Faculties and schools  
Centres and institutes  
Campus locations  
Maps and locations

## Connect

Contact us  
Find a staff member  
Careers at Sydney  
Events  
Emergencies and personal safety



[Disclaimer](#)

[Privacy](#)

[Accessibility](#)

[Website feedback](#)

ABN: 15 211 513 464  
CRICOS Number: 00026A  
TEQSA: PRV12057